

# SOCIAL



# VALUE DELIVERY



**We welcome you to read this newsletter edition to explore some of the Social Value Activity delivery to date, enabled through the construction of the Gull Wing Bridge.**

Social Value is at the core of Farrans' vision, mission and Company values. To ensure that the Gull Wing Bridge Project can leave a lasting legacy to Lowestoft and the local surrounding areas, a bespoke Social Value Delivery Plan was developed during the pre-construction stage.

Throughout the construction of the Gull Wing Bridge, Farrans has worked to deliver an educational outreach programme, local volunteering and community engagement events, site visits, and work experience. The project has also facilitated a number of apprentice and graduate positions and career opportunities.

# COMMUNITY ENGAGEMENT

**Community Open Day 22' | 125 Attendees**



**University of the 3rd Age, 'Science in the News' Group**



**Community Open Day 23' | 110 Attendees**



**289**  
Visitors on Public Tours & Talks

**Contact Us:** If you have any queries about the project or our social value delivery please email us at [info@gullwingbridge.co.uk](mailto:info@gullwingbridge.co.uk) or call the project helpline on **01502 512 779**

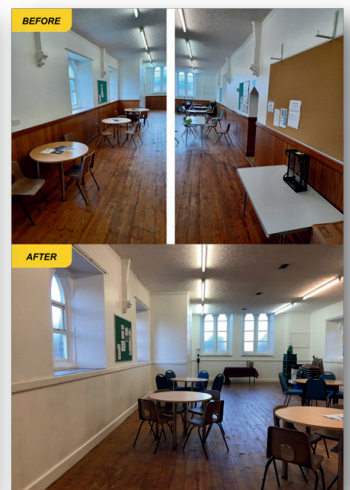


# VOLUNTARY & CHARITY

## DELIVERY OVERVIEW

Proactive communication with the local community over the duration of construction has supported the project to engage and partner with various community/voluntary organisations and social enterprises in the local area. Consultation and collaboration enabled the identification of areas / projects in the most need and where investment could make the most impact.

**14**  
Community Initiatives Supported



Tree Planting at Woods Meadow, Oulton

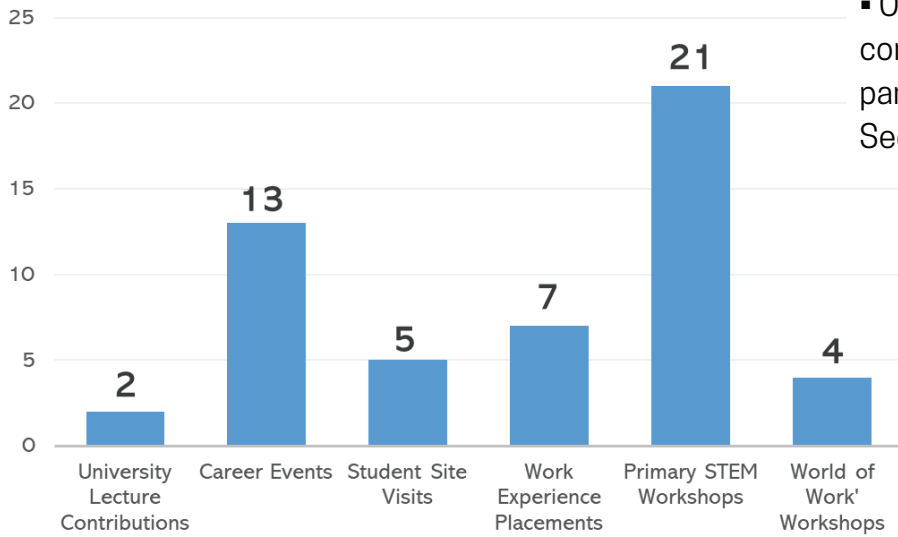




# EDUCATIONAL OUTREACH

## AIMS AND VALUES

- To enthuse, engage, and empower children and young people to seek careers in science, technology, engineering or mathematics
- Over the duration of the Gull Wing Bridge's construction, this is achieved through partnerships with local Institutions at Primary, Secondary and Higher Educational levels.



**105**

Days of Student Work Experience

**13**

Local Primary Schools Engaged

**2200+**

Local Students Engaged



# CAREER/SKILLS OPPORTUNITIES



## DELIVERY OVERVIEW

At Farrans, we want to provide everyone with an opportunity to work and succeed in construction and civil engineering. Over the course of the Gull Wing Bridge project, we have endeavored to tackle employment issues head on through proactively engaging with unemployed individuals, individuals not in education or training (NEET), new entrant trainees and under-represented groups.

We also recognise that we don't all learn in the same way. Therefore, we have offered work placements, higher level Apprenticeships and Graduate opportunities in a variety of areas on engineering and construction, from Construction Management to Quantity Surveying and Site Engineering.

10

Apprenticeship Placements

9

Graduates Opportunities

11

Previously Unemployed Positions

2

T-Level Placements

4

Adult Learning Workshops

# CONSIDERATE CONSTRUCTORS SCHEME



The Considerate Constructors Scheme Code of Considerate Practice helps drive better conduct and higher standards across construction activities. The project receives three full site audits per year where we are assessed in three categories: Respect the Community, Care for the Environment and Value their Workforce.

In our five site audits to date, we have received scores of over 42 out of 45, achieving a performance level of 'Excellent' consistently. **Full marks were achieved in our last three audits.**