



Newsletter 2023 - Issue 3

Welcome to our third newsletter of 2023. The project continues to make good progress and the bridge is coming into full view, with the shape and structure of the control tower building now clearly visible above the main bridge deck.

The final gap remaining to be infilled is the main Bascule steel section with its distinctive J beams. The northern highways works continues as well as the south embankment running up to the bridge itself.

This newsletter will take a look at some of the work that has taken place over the Summer, as well as an update on how the project has helped education within the community.

We are always happy to hear from you and any feedback or ideas to improve our newsletter. Please see our contact details at the end of the newsletter.

Project Website



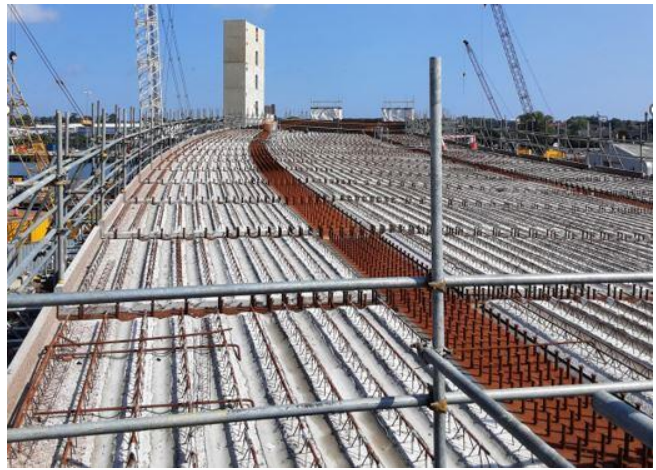
Just a reminder that the project website is always being kept up to date. Showing all the latest and historical Press Releases, Images and Videos from around the site as well as background information and documentation showing the varying processes the bridge has had to go through to get to this point. The site also shows a direct link to our Twitter feed and Livestream Webcam.

Check the site out at www.gullwingbridge.co.uk

Northern and Southern Approaches

Since June 2023 following the installation of the Southern and Northern Approach Viaduct steelwork, the next phases of the deck construction have been taking place.

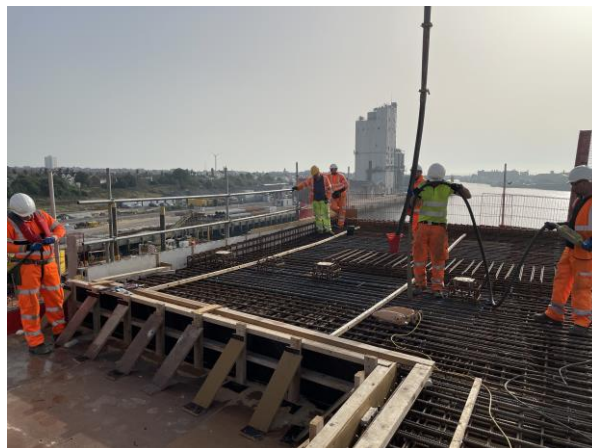
The first stage which took place throughout June and July, was the installation of the “OmniaPlanks” onto the steel framework. These pre-formed concrete planks were slotted in between bolts which were already welded onto the steelwork during fabrication. Once in place the planks not only form a platform, but tie in and give strength to the structure. On top of this further reinforced bar was placed to bind in with the poured concrete. This stage of the process has now been completed on both the North and South sides of the bridge.



With the OmniaPlanks complete, the teams stayed on the Southern Approach, continuing with the installation of the reinforced steel bars, in preparation for the concrete pours. These 10 pours were done in a specific order, to enable proper curing of each section.



Throughout August and September a total of 10 concrete pours took place to complete the deck level. Once these have been finished and checked, the crews will move over the North side of the lake and repeat the same processes there.



In addition to the deck pours, due to the weight of the opening section of the bridge being on the Southern side, a special “encapsulation pour” took place in early September over the end of Pier 4. As the description says, the concrete encapsulates the end of the steel work over the pier, binding it and the steel structure together allowing extra support and strength.

Control Tower & Plant Room Update

Along with the bridge structure, the Control Tower and Plant Room have been progressing. The tall structure of the control tower core, housing the staircase and lifts, has been complete along with the adjoining rooms giving it its unusual cantilever shape are being finalised.



Meanwhile the Plant Room has now had the large backup generator and hydraulics systems tested and installed, as well as being fitted out with housing for electrical system cabling. This now needs to be routed up into the Control Room itself.



Northern Highways Network

For the past few months work has been taking place on the north side of lake to create a new road network leading to the northern approach.

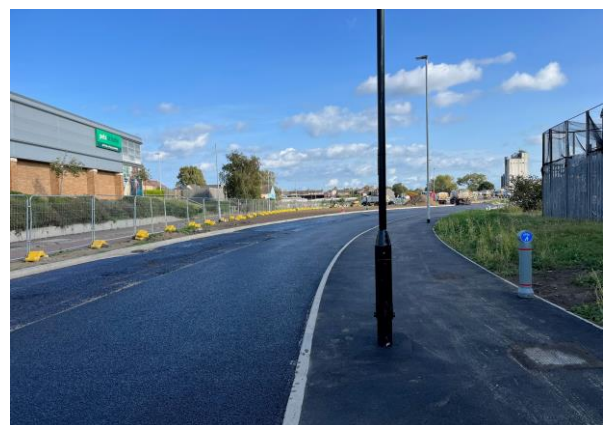
The works have included the creation of a new roundabout, slip roads and footpaths, as well as adapting the existing roads in the area. As these works start to draw to its conclusion, a new footprint can be clearly seen in the area as seen below.



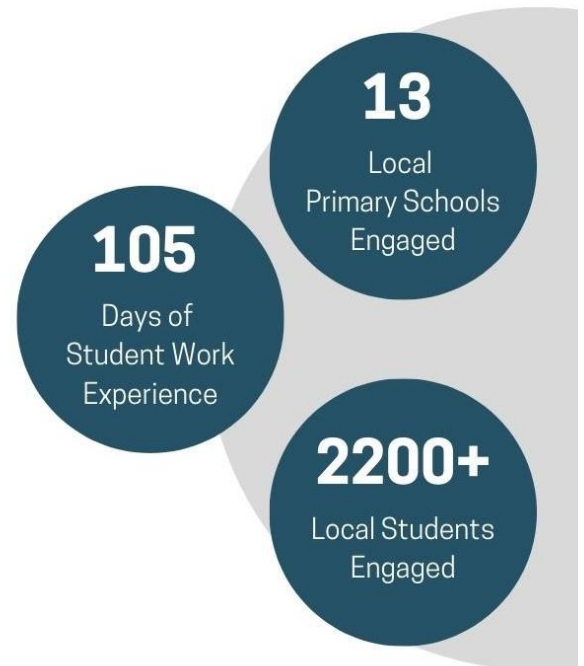
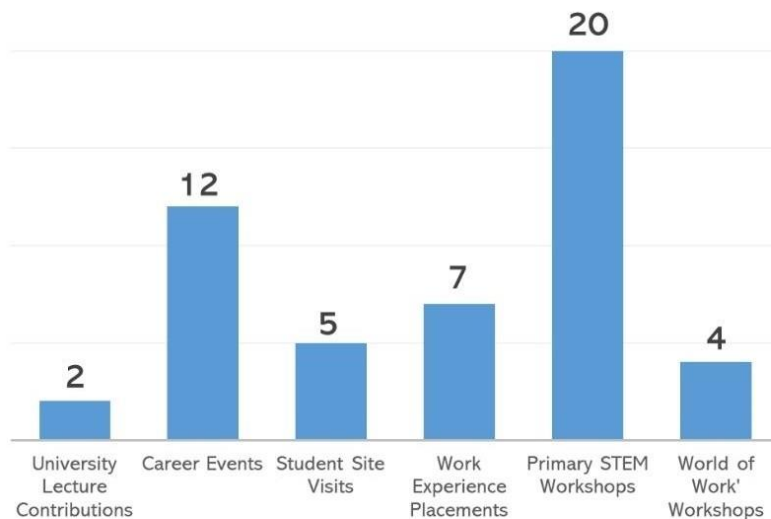
The new larger roundabout starts the incline up the Northern Approach and over the bridge. The approach itself comprises of 2 retaining walls which is filled with compacted aggregate before the layer of asphalt is installed.



At present we are at the asphalt stage of the road network, both on the roadways and the new footpaths. Once these are completed road markings and street furniture/signs will be installed.



EDUCATIONAL OUTREACH



Social Value is at the core of Farrans' vision, mission and Company values. To ensure that we leave a lasting legacy to Lowestoft and the local surrounding areas, we developed a bespoke Social Value Delivery Plan during the pre-construction stage. Throughout the construction of the Gull Wing Bridge, we have worked to deliver an educational outreach programme with aim to enthuse, engage, and empower children and young people to seek careers in science, technology, engineering or mathematics.

Over the duration of the Gull Wing Bridge's construction, this is achieved through partnerships with local Institutions at Primary, Secondary and Higher Educational levels.

If you have any queries about the project's social value delivery, educational outreach or work experience opportunities, please email the Community Benefit team at info@gullwingbridge.co.uk or call the project helpline on 01502 512 779.

Naming Competition Winners Site Visit



At the end of August, the Project was happy to welcome back to site the 3 Winners of the Bridge Naming Competition that took place in 2019. The competition, open to Year 6 pupils around Lowestoft, set the task of giving the bridge its official name. The winners were children from Somerleyton School

On this special visit, the children and an adult guest were treated to a walk around site, for a close-up view of the works taking place, this even included being taken up onto the bridge itself on the southern approach where they witnessed some of the concrete being poured during the next phase of works. Over on the North side, they had a chance to walk around some of the new road layout and roundabout construction works.

Volunteer Work



During September, TOPCATS saw volunteers from both the Gull Wing Bridge Project in Lowestoft and the Barsham Water Treatment Works project in Beccles prep and paint the exterior of TOPCATS HQ. The work involved sanding, cleaning, de-weeding and prepping the site, as well as painting the new green colour. Farrans Construction supplied the paint, painting supplies and volunteers.

Special thanks also go to Javlin Formwork, a sub-contractor for the Gull Wing Bridge Project, who provided some volunteers to join us with some of the prep work, and Sunbelt Rentals Plant & Tools (Norwich Branch) for kindly providing us with powered access for both days.

Further Information and Contact Details

For more information on Gull Wing, visit www.gullwingbridge.co.uk

You can email the project team at info@gullwingbridge.co.uk or telephone 01502 512779

If you no longer wish to receive updates about the Gull Wing bridge please email us on info@gullwingbridge.co.uk and we will remove you from the mailing list.

Follow us on :

Twitter - [@gullwingbridge](https://twitter.com/gullwingbridge):

Facebook – [Gullwingbridge](https://www.facebook.com/Gullwingbridge):

Instagram - [Gullwingbridge](https://www.instagram.com/Gullwingbridge)

For up-to-date information about roadworks in Lowestoft, please visit one.network

We are registered with the
Considerate Constructors Scheme

If you have a concern about this construction site or would like to provide feedback,
please contact the Considerate Constructors Scheme Public Support team at:
[0800 783 1423](tel:08007831423) / PUBLICSUPPORT@CCSCHEME.ORG.UK / CCSCHEME.ORG.UK / [@](#) <#> [i](#)

