



# Newsletter

## 2023 - Issue 2

Welcome to our second newsletter of 2023. We've made a huge amount of progress on site so far this year and the bridge structure is visibly taking shape, with all 7 of the fixed steelwork bridge spans now having been lifted into place. Work has also been underway on the northern highways and both the north and south approach embankments and retaining walls.

The plant rooms and control tower have also progressed well and the mechanical, electrical & hydraulic systems will be coming during the coming months. Once this work has been installed, tested and commissioned the sliding bascule span across Lake Lothing can be brought to site and installed.

We are always happy to hear from you and any feedback or ideas to improve our newsletter. Please see our contact details at the end of the newsletter.

### Livestream Camera – Upcoming Changes



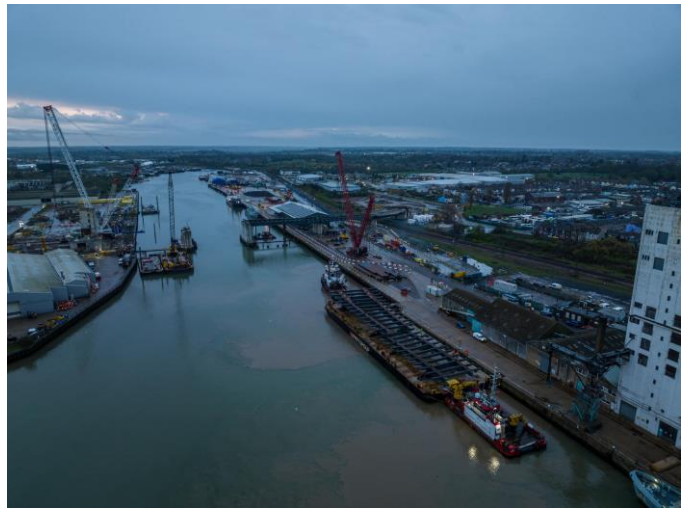
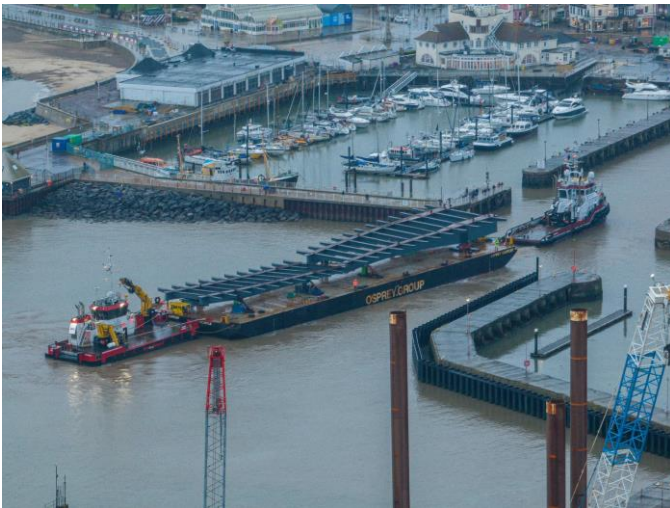
Since the start of 2023 the remaining steelwork sections of the North and South Approach Viaducts have been delivered and installed. As a result, there has been a lot of interest in the Livestream cameras pinpointing areas of the site to provide a live view of works taking place. As the bridge is becoming more complete, we will be making some slight changes to the focal points, to allow for a better overall view of the work taking place. If you have not visited the Livestream, please check it out at [www.gullwingbridge.co.uk/Livestream](http://www.gullwingbridge.co.uk/Livestream)

## South Approach Viaduct and Embankment

Approach works to the bridge opening from Waveney Drive are moving forward as the project progresses. Following the completion and opening of the roundabout in December 2022 the approach infrastructure is visibly coming together. As the new road slopes up from the roundabout to the Southern Abutment, reinforced earth embankment walls have been constructed creating the correct degree slope to the piers. Strength is provided by a mixture of geogrids and compacted granular backfill material, in combination with engineered facing blocks.



During May 2023 the Southern Approach Viaduct (SAV) structures were delivered from Belgium. Due to the size and weights of the steel, they were stacked in 2's and brought over on 2 separate barges. First to arrive was SAV 1 & 3.



SAV 1 weighed 105T with a length of 35m. SAV 3 is 213T and 41m

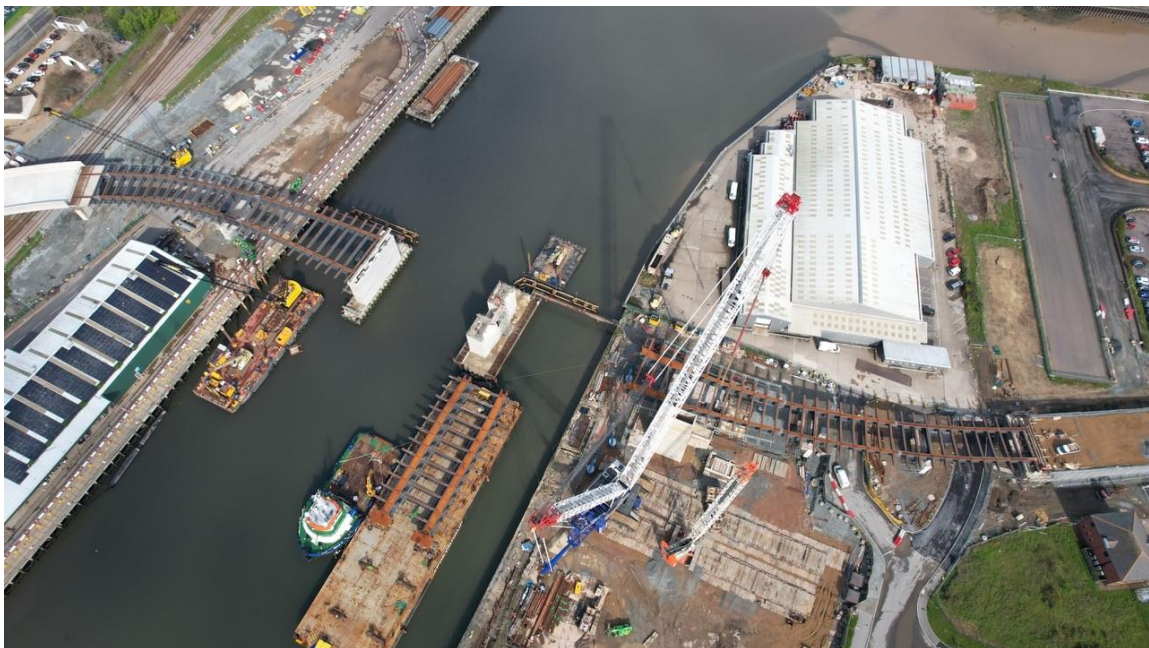
The structures were lifted and moved by one of the largest cranes in the world, the Demag CC8800-1, which has a max lifting capacity of 1600t. The crane arrived by ship from Denmark directly into Lake Lothing thereby minimising its environmental impact. Otherwise more than 100 HGV loads would have been needed to transport by road. The crane took 2 weeks to assemble and could be seen on the skyline around Lowestoft.



SAV 1 was installed first, with SAV 3 stored on the quayside, to allow the barge to return back to Rotterdam to collect SAV 2 & 4, which arrived a week later.



During the first week of May 2023 the final 3 steelwork spans were installed. SAV 2 weighed 90T with a length of 30m. SAV 4 is 381T and 45m in length.





## North Approach Viaduct & Embankment

All steelwork bridge sections on the Northern side of the Lake are now in place. The final 2 structures, NAV2 and NAV3 arrived in March. NAV 2, which is 42m long, and weighs 221 tonnes, is situated between Pier 7 and Pier 6, linking in with NAV 1. NAV 3, which is 50m long and weighs 182 tonnes, is placed between Pier 6 and Pier 5 over the north bank of Lake Lothing.



As there was less requirement for reach, NAV 2 & 3 were moved using a smaller crane than the South side. The Liebherr LR1600 has a 600T capacity, and took a total of 18 articulated lorries, and 3 days to assemble.



All 3 sections of the Northern Approach Viaducts are now in place, (NAV1 was installed over the railway line last October) and are awaiting the next stage of works.





## Education and Community Engagement

## National Apprenticeships Week



During February 2023, to celebrate National Apprenticeships Week, we attended the East Coast College apprenticeships fair. We were able to tell local students about the fantastic opportunities that a career in Civil Engineering can bring. The event was very well attended and the project was grateful of the opportunity to look to the future.

## Woods Meadow Country Park – Tree Planting



Volunteers from the Project returned to the Woods Meadow Country Park development in Oulton for a tree planting morning mid-February. Along with the Countryside Ranger from East Suffolk Norse, we planted around 200 oak trees in the back field. Within the park so far, over 4,000 have been planted since October 2021.

## **Kirkley Pocket Parks Group**

Kirkley Pocket Parks is a group of dedicated local volunteers whose mission is to “put the love back into unloved parts of Kirkley”.

An ongoing project which the group have been working on for nearly a year is on the corner of Cleveland Road and London Road South. This area houses a substation and fenced garden which over the years had become an overgrown dumping area. The group acquired the licence to transform the garden space in Autumn 2022 and since then have achieved so much through the hard work of local volunteers.

The site was cleared of litter and vegetation and new hoarding was installed which now hosts a fantastic art mural celebrating Kirkley. The surrounding fence has been given a new lease of life with a fresh coat of paint and the group now awaits the delivery of 7 large new planters to fill the space.



The mural was designed by artist Catalina Carvajal who ran workshops with different age groups from Kirkley - from Red Oak primary school to Orwell Court assisted living home, the Kirkley youth group and two workshops at the Kirkley Centre. Participants were asked “what they loved about living in Kirkley.” From this Catalina has designed the Mural around the answers she received.

Farrans were delighted to be able to donate the black metal fence paint to help support the group in their endeavours. Our Community Benefit Coordinator also had a go at painting some of the mural for herself!

If you'd like to keep up with Kirkley Pocket Parks Group, or find out ways that you can get involved in their projects, they can be found on Facebook here:

<https://www.facebook.com/Kirkleypocketpark>

Images Source: Kirkley Pocket Parks Group





# ART PROJECT

FARRANS  
A CRH COMPANY

Suffolk  
County Council



Lowestoft has many things which are unique to the town, making it a great place to live, work and visit. Once complete, the new Gull Wing Bridge will add to this list and be an iconic and exciting structure for all to see.

We'd love to see your best artwork promoting Lowestoft, showcasing the town's cultural past, present or future!



# ART PROJECT



A good way to start could be creating a mind map of all the things you love about Lowestoft. Think about the structures you see or the places that you like to go.



In groups or on your own, use the things you've added to the mind map to create a poster showing us what Lowestoft means to you.

You could draw them, paint them, write them, or even make a collage using lots of different techniques.

We'd love to see your best drawings of the Gull Wing Bridge too!



Submissions email: [info@gullwingbridge.co.uk](mailto:info@gullwingbridge.co.uk)

Suffolk  
County Council

FARRANS  
A CRH COMPANY

## SOCIAL VALUES – OUTREACH UPDATE

### Educational Outreach Placement and Employment Opportunities

**12**

Careers Talks / Open Events attended.

**20**

Primary School STEM Sessions delivered.

**5**

Site Visits held for Local Students.

**7**

Work Experience Placements facilitated for local College Students.

**2000+**

Approximate No. of Local Students reached through Educational Outreach Events.

**11**

Job Opportunities for LTU & NEETS

**10**

Apprenticeship positions filled on the project.

**9**

Graduates positions on the Project

**5**

University placements facilitated on the project.

### Further Information and Contact Details

For more information on Gull Wing, visit [www.gullwingbridge.co.uk](http://www.gullwingbridge.co.uk)

You can email the project team at [info@gullwingbridge.co.uk](mailto:info@gullwingbridge.co.uk) or telephone 01502 512779

If you no longer wish to receive updates about the Gull Wing bridge please email us on [info@gullwingbridge.co.uk](mailto:info@gullwingbridge.co.uk) and we will remove you from the mailing list.

Follow us on :

Twitter - [@gullwingbridge](https://twitter.com/gullwingbridge):

Facebook – [Gullwingbridge](https://www.facebook.com/gullwingbridge):

Instagram - [Gullwingbridge](https://www.instagram.com/gullwingbridge)

For up-to-date information about roadworks in Lowestoft, please visit [one.network](http://one.network)

We are registered with the  
Considerate Constructors Scheme

If you have a concern about this construction site or would like to provide feedback,  
please contact the Considerate Constructors Scheme Public Support team at:

0800 783 1423 / [PUBLICSUPPORT@CCSCHEME.ORG.UK](mailto:PUBLICSUPPORT@CCSCHEME.ORG.UK) / [CCSCHEME.ORG.UK](http://CCSCHEME.ORG.UK) / [@](#) <#> [i](#)

