

LOWESTOFT

# Newsletter

## 2023 - Issue 1

Following a busy 2022 the project continues onward in 2023. The successful completion of the Southern Roundabout and links to Waveney Drive and Tom Crisp Way in December has enabled works to commence on the Southern Approach embankment. Work continues also on all of the concrete bridge piers and the control tower, and Piers 4 and 5 are starting to emerge from Lake Lothing into the skyline. We are already looking forward to the Spring when the pre-fabricated steel bridge viaduct sections will start arriving.

### Twitter Feed Addition to Website



To ensure we keep as many people up-to-date with the latest news and information changes to the layout of the website front page have now been made. These changes mean that the link to the Livestream is now easier to get to, along with the addition of a direct link to our Twitter feed. As a project we try to ensure a minimum of 1 story is posted on Social Media every week, using the 3 main Social Media sites of Facebook, Twitter and Instagram. These changes to the Website ensure those who use it also have access to this information.

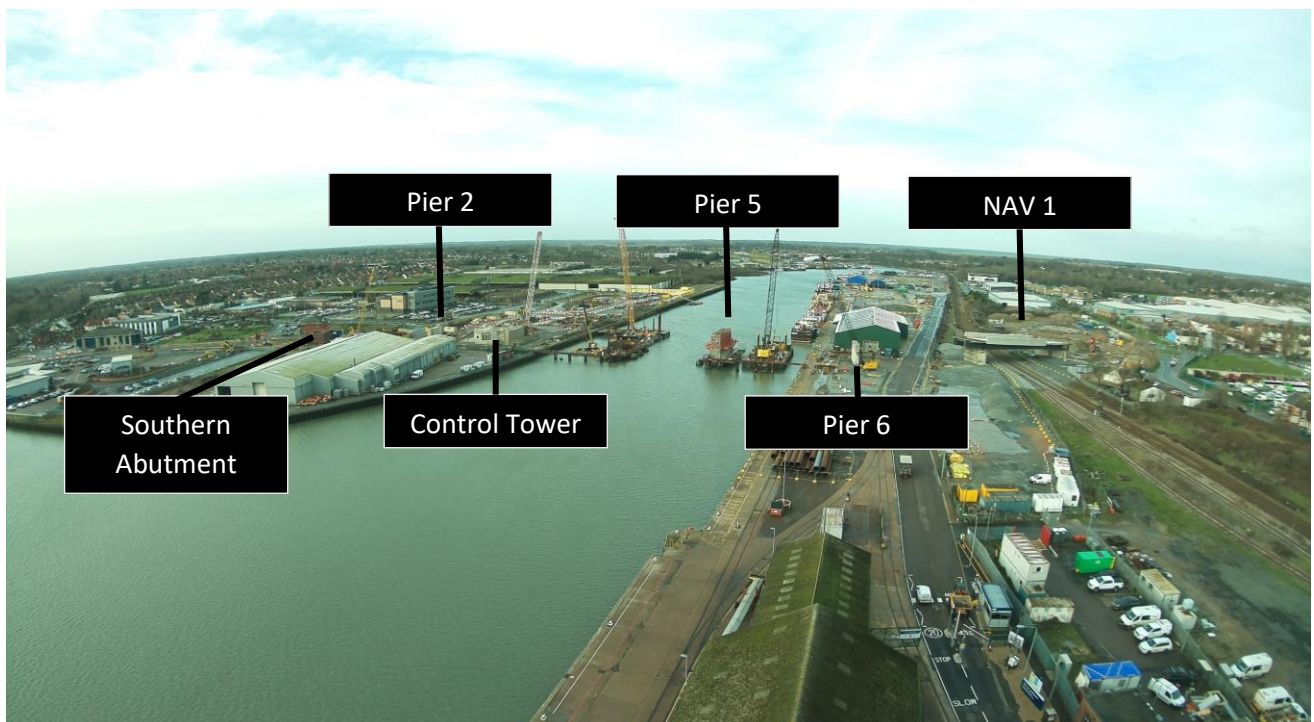
## A Look Back at 2022

At the start of 2022, the country was still subject to COVID restrictions and high levels of COVID infection. Constructing an eight span bridge infrastructure project of this magnitude and scale in that environment was a challenge. Despite this, 2022 has seen the project make significant progress, with the physical footprint of the bridge starting to making its mark in the town.

As you will see from the next 2 pictures, taken from the camera on top of the old grain silo there are noticable additions to the landscape. On the right of the image the Northern Approach Viaduct (NAV 1) and Pier 6. In the lake itself, sprouting out of the Cofferdam is Pier 5, with similar works taking place on Pier 4). Over on the left hand, and most noticable, is the Plant Room and Control Tower building which is now well under way.



View of the Lake– January 2022 (above) and January 2023 (below)

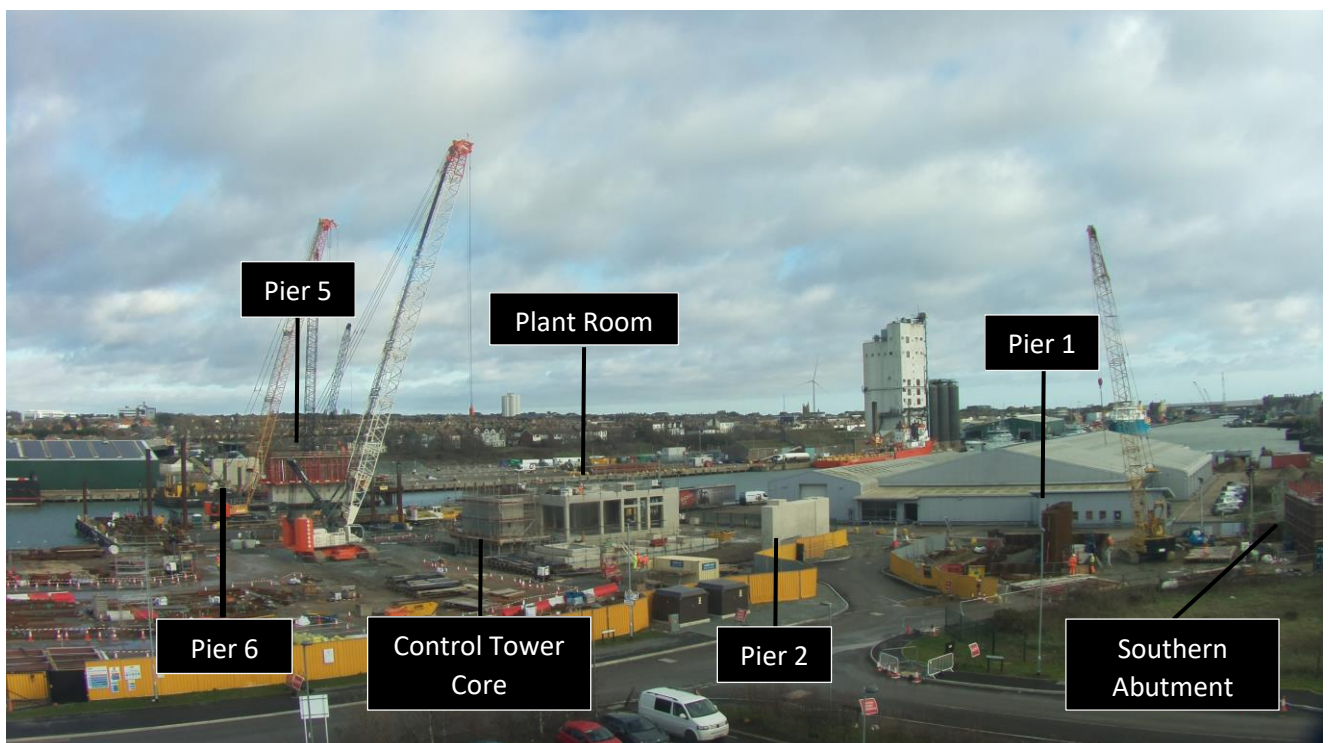




Below is a closer look at the works on the South side of the Lake, taken from the camera placed on top of the Riverside council offices. You can clearly see Pier 6 on the North bank, then Pier 5 in the lake and work continuing on Pier 4. This side of the lake the larger building being constructed is the Plant Room. Attached to it is the starting stages of the central core of the Control Tower itself, which will be a 6-storey building rising above the bridge. Moving right from that is Pier 2, then Pier 1 and finally the Southern Abutment on the right hand edge of the image.



View from South of the Lake– January 2022 (above) and January 2023 (below)



## **Other Completed Works**

On 4<sup>th</sup> November 2022 we had the official opening of Colin Law Way, which runs from Waveney Drive. The road was formally opened by Councillor Law's widow, Deanna, and other members of his family.



Following months of preparatory work, in December 2022 we were pleased to open the new southern roundabout on Waveney Drive was opened. Works are now continuing on the southern approach embankment which leads from the roundabout to the bridge itself.





## Drone Images and Time-Lapse Video

To enable us to capture the project and construction as it progresses and grows, a local Photography and Multimedia company - CHPV Offshore Film & Photography Services have been commissioned to install and upkeep cameras on the old grain silo in Commercial Road, and on top of the Riverside Council offices. Every 3 minutes these cameras take an image and store it. These images are then put together, much like an animation, to create a time-lapse video. These have been used on a number of occasions throughout the project, including footage of NAV 1 being installed as well as a time-lapse video of works in the lake from April-December 2022. The latest version of this time-lapse video, covering January-December 2022 has been shared on Social Media, and can be viewed at <https://youtu.be/RgwJyiiTUI8>

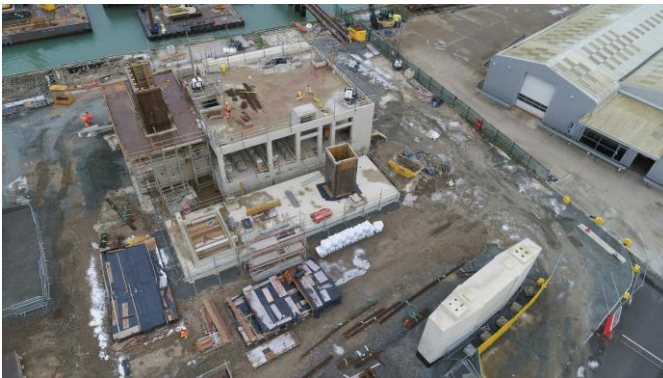
We also capture occasional drone footage of various aspects of the project. Below are just some of the images taken at the beginning of January 2023:



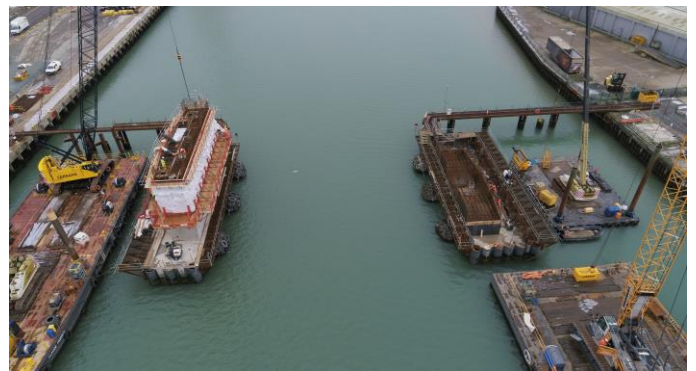
Southern Roundabout



Southern Abutment and Pier 1



Pier 2 and Control Tower Buildings



Piers 5 and 4



NAV 1 in place



Colin Law Way

# Denmark Road/Peto Way Closure

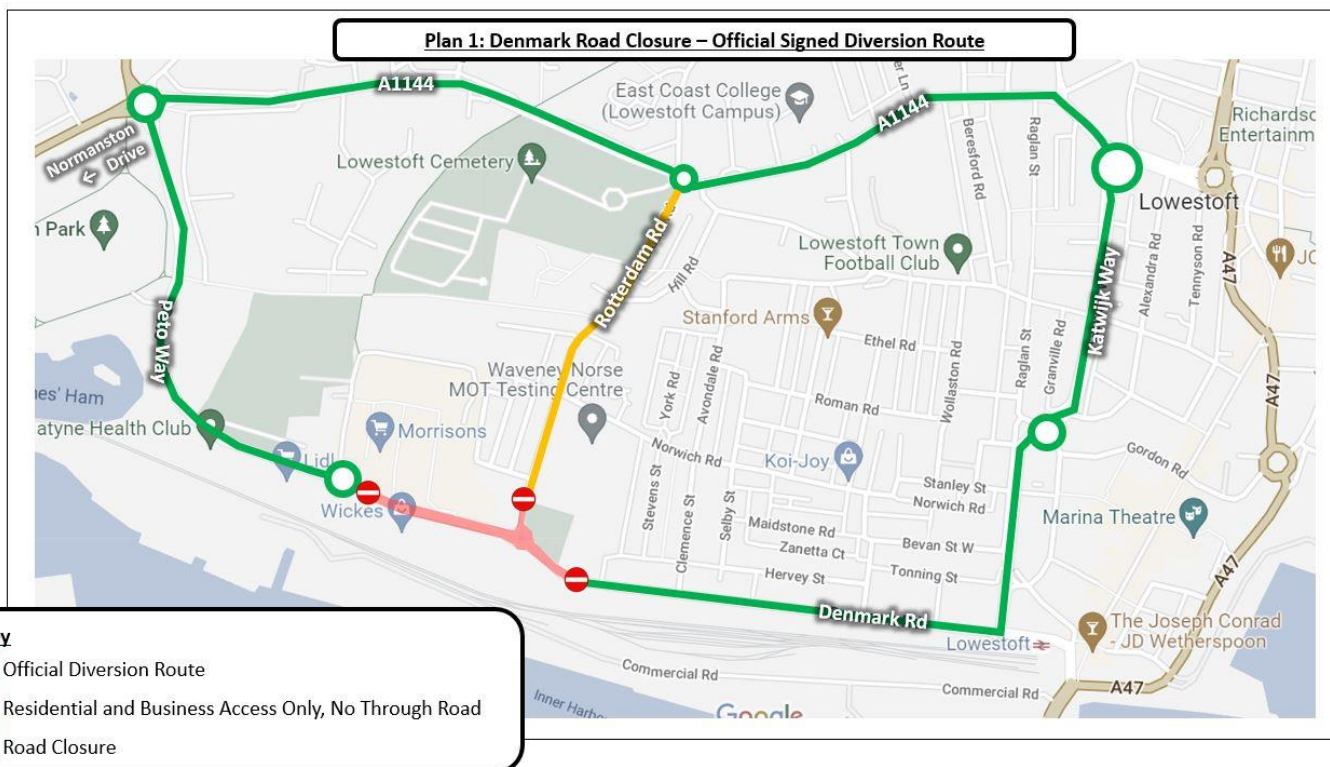
Due to the ongoing construction works for the Gull Wing, there are to be some upcoming road closures on the northern side of the project.

Denmark Road, Peto Way and the southern end of Rotterdam Road will be closed to vehicles from 7am on Wednesday March 1<sup>st</sup> 2023, to allow for the building of the new northern roundabout and approach road to the bridge.

The work is anticipated to take no longer than six months. An official diversion route has been agreed and diversion signs will be in place. Full closure of the roads to vehicles will avoid complicated traffic management over a longer period of time which would require three-way traffic lights. Full pedestrian and cycle access through the works will be maintained at all times and this will be clearly sign-posted. We kindly urge all road users to follow this official signed diversion route and refrain from cutting through to main roads using the smaller, residential streets in the area.

The approach taken will provide a safe environment for construction workers and the general public with barriers fully enclosing and segregating the works. It will also enable a greatly reduced amount of night and weekend working and its associated noise disturbance for neighbouring residents.

The 2 images below show the diversion route for the traffic during the closure, along with access points for pedestrians, cyclists and works traffic





## Plan 2: Denmark Road Closure - Pedestrian, Cyclist and Works Access



We do appreciate this work will cause some disruption for a temporary period and we thank people for their continued patience and support for this project. Once complete the project will deliver long-lasting benefits to the Town. We apologise for any short-term inconvenience this closure may cause.

## SOCIAL VALUES – OUTREACH UPDATE

### Educational Outreach Placement and Employment Opportunities

10	Careers Talks / Open Events attended.
16	Primary School STEM Sessions delivered.
4	Site Visits held for Local Students.
5	Work Experience Placements facilitated for local College Students.
1600	Approximate No. of Local Students reached through Educational Outreach Events.
103	Staff Hours dedicated to Educational Outreach Events.
9	Job Opportunities for LTU & NEETS
8	Apprenticeship positions filled on the project.
10	Graduates positions on the Project
5	University placements facilitated on the project.

### Community Investment

12	Laptops donated to Local Secondary Schools
81	Local Suppliers and Subcontractors used within a 70 Mile radius.

## Further Information and Contact Details

For more information on Gull Wing, visit [www.gullwingbridge.co.uk](http://www.gullwingbridge.co.uk)

You can email the project team at [info@gullwingbridge.co.uk](mailto:info@gullwingbridge.co.uk) or telephone 01502 512779

If you no longer wish to receive updates about the Gull Wing bridge please email us on [info@gullwingbridge.co.uk](mailto:info@gullwingbridge.co.uk) and we will remove you from the mailing list.

Follow us on :

Twitter - [@gullwingbridge](https://twitter.com/gullwingbridge):

Facebook – [Gullwingbridge](https://www.facebook.com/Gullwingbridge):

Instagram - [Gullwingbridge](https://www.instagram.com/Gullwingbridge)

For up-to-date information about roadworks in Lowestoft, please visit [one.network](http://one.network)

We are registered with the  
Considerate Constructors Scheme

If you have a concern about this construction site or would like to provide feedback,  
please contact the Considerate Constructors Scheme Public Support team at:

0800 783 1423 / [PUBLICSUPPORT@CCSCHEME.ORG.UK](mailto:PUBLICSUPPORT@CCSCHEME.ORG.UK) / [CCSCHEME.ORG.UK](http://CCSCHEME.ORG.UK) / [@](#) [CCSCHEME](#) [CCSCHEME](#) [CCSCHEME](#)

REGISTERED  
SITE

CONSIDERATE  
CONSTRUCTORS  
SCHEME

