

LOWESTOFT

Autumn 2022 Newsletter

Welcome to the latest edition of the Gull Wing Newsletter. As 2022 draws to a close the project has made dramatic progress with the successful placement of the first section of the northern viaduct (NAV 1) during a recent weekend possession of the East Suffolk railway line. The control tower plant room is taking shape in the southern part of the site and the southern roundabout is nearing completion. This issue will highlight some of the recent works in and around the site.

We are always happy to hear from you and any feedback or ideas you have to improve our newsletter. Please see our contact details at the end of the newsletter.

Site Livestream Webcam



From the beginning of September a Webcam has been installed on the Riverside Council building, adjacent to the site. This runs a constant livestream of the site, focusing on various areas of work for people to view. For specialist events, such as the move of NAV 1, or the delivery of the other approach viaducts in 2023, the camera will highlight the areas impacted in far more detail, for longer periods of time.

You can visit the Livestream using the following link:

<https://gullwingbridge.co.uk/livestream/>

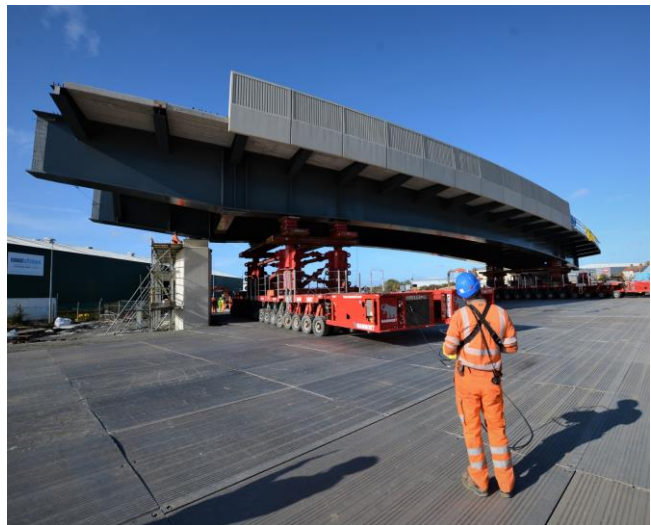
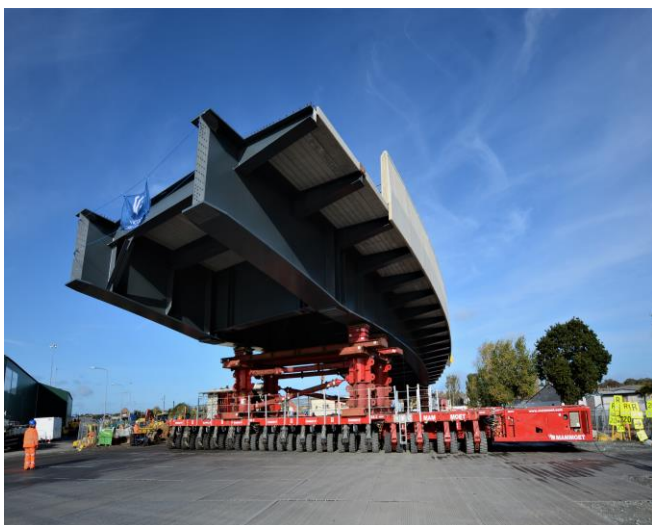
NAV 1 Move



During late-October the first of the Northern Approach Viaducts (NAV 1) was moved into place spanning the gap between Pier 7 and the Northern Abutment. Due to the limited time the project was allowed to possess the Network Rail track, all concreting and preparation works had to take place adjacent to its final resting place, allowing just 1 weekend to move the 55m long, 1400 tonne structure.



Once NAV 1 had been loaded onto the massive Self-Propelled Modular Transporters (SPMT's) the movement had to be done in 3, careful steps. Firstly, as shown on the above image, the structure was turned to face the correct direction, with the curve running the right way.



During the October 22/23 weekend railway possession, the tracks were covered with stone ballast and load-bearing sheets. The span was then steadily moved adjacent to Pier 7 and the Northern Abutment, before being slotted into place and lowered on to temporary jacks. With final adjustment taking place NAV 1 was then fully positioned. Finally the tracks were reinstated and the re-opening of the railway took place on time as planned.



The move itself was covered by Local Press as well as BBC Look East, and a video can be viewed on our website at www.gullwingbridge.co.uk/project-videos.

Control Tower Update



Signs of the new bridge footprint are appearing everywhere across our site, particularly around the seven piers and two abutments.

The reinforced concrete control tower plant room next to pier 3 has recently taken shape and the roof has now been poured. Formwork is progressing for the next stages of the control tower building which will ultimately be 6 storeys high as shown in the visualisation of the bridge.

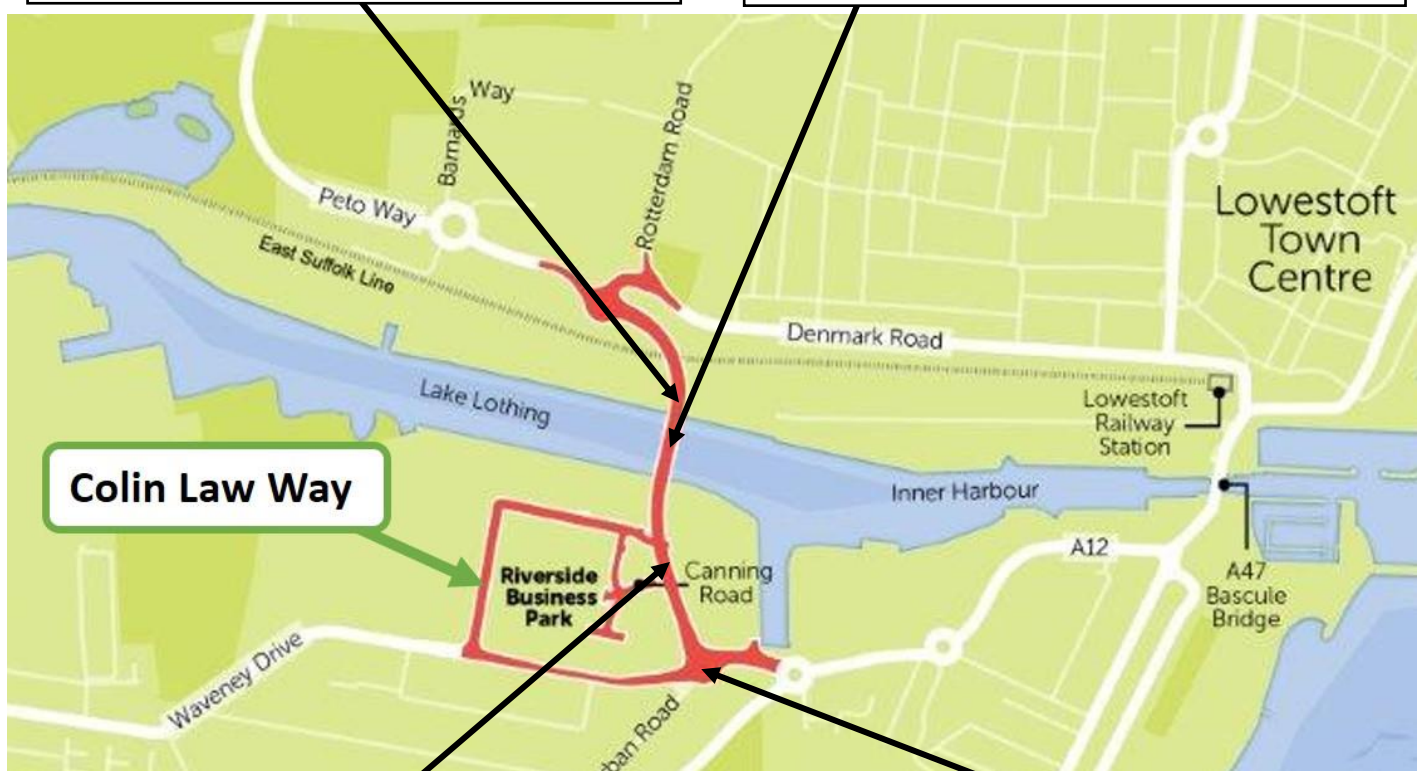
Recent Site Achievements – Around the Site



A – Pier 4 Piles Cut and Cleared Out



B – Pier 5 Formwork for Stem



C – Pier 6 Completed and Backfilled



D – Southern Roundabout

A

Pier 4 Piles Cut and Cleared Out

Pier 4 cofferdam has now been strengthened and de-watered, enabling the cutting down of the piles in preparation for the pilecap steel reinforcement to be installed.

B

Pier 5 – Formwork for Stem

Steel Reinforcement are now being installed onto the Pier 5 pilecap ahead of the concrete pour for the stem.

C

Pier 6 Completed and Backfilled

Pier 6 has had its base area sealed and backfilled, in preparation for the installation of NAV2 and NAV3 which will take place in early 2023.

D

Southern Roundabout

Progress continues on the southern roundabout and the adjacent attenuation tanks.

Colin Law Way Formal Opening



Colin Law Way at Gull Wing Bridge in Lowestoft has now been formally opened.

On Friday 4th November, the road named in honour of a councillor who helped bring the Gull Wing bridge to Lowestoft has been formally opened.

Colin Law Way, which runs from Waveney Drive is named after Councillor Colin Law, who was leader of the former Waveney District Council for six years until his death in May 2017. He also served as a Suffolk county councillor.

It was formally opened in a ceremony on by Councillor Law's widow, Deanna, and other members of his family.

Paget's People Awards



Farrans were delighted to sponsor the Partnership Working Award at this year's James Paget Hospital Charity's 'Paget's People' awards ceremony.

The awards ceremony highlights the work of the hospital's remarkable staff, with patients, colleagues and the wider public able to nominate those individuals who have made an outstanding contribution. Every Spring the charity invites nominations in 12 categories, including, Team of the Year, Employee of the Year, Volunteer of the Year, the Inspiration Award and the Partnership Working Award. This year saw more than 360 nominations from patients, their families and staff for the awards.

Congratulations to the Emergency Department who received this year's Partnership Working Award, and to all the other hospital staff and award winners for your continued hard work. Read more about the Paget's People awards at: <https://www.jpaget.nhs.uk/news-media/news-events/2022/october/our-pagets-people-awards-winners/>

Further Information and Contact Details

For more information on Gull Wing, visit www.gullwingbridge.co.uk

You can email the project team at info@gullwingbridge.co.uk or telephone 01502 512779

If you no longer wish to receive updates about the Gull Wing bridge please email us on info@gullwingbridge.co.uk and we will remove you from the mailing list.

Follow us on :

Twitter - [@gullwingbridge](https://twitter.com/gullwingbridge):

Facebook – [Gullwingbridge](https://www.facebook.com/Gullwingbridge):

Instagram - [Gullwingbridge](https://www.instagram.com/Gullwingbridge)

For up-to-date information about roadworks in Lowestoft, please visit one.network

Improving the image
of **construction**

This site is registered with the Considerate Constructors Scheme
For more information call: 0800 783 1423 visit: www.ccscheme.org.uk

