

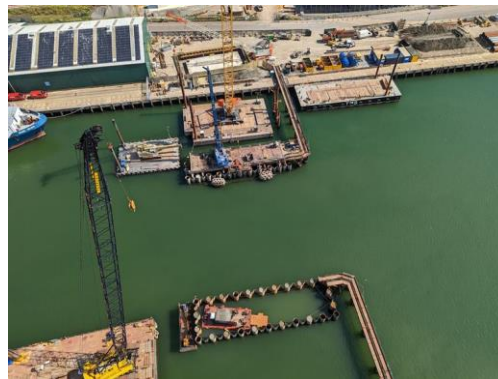


June 2022 Newsletter

Welcome to the Gull Wing Project's June Update. As Summer progresses, we have exciting work continuing in all areas of the site.

We are always happy to hear from you and any feedback or ideas you have to improve our newsletter. Please see our contact details at the end of the newsletter.

Current Works



- Pier 4 Work – Concreting Wet Plug and Dewatering, including underwater excavation, steel fixing and welding works.
- Pier 5 – Continuing Marine Rotary Bored Piling.
- Bridge Pier Construction to:
 - North Abutment - Walls
 - Pier 6 - Stem
- Control Tower – Reinforced concrete structure.
- Southern Roundabout drainage and kerbing works
- Deep Soil Mixing for the Northern Approach Embankment
- North Approach Viaduct - Reinforced Concrete Deck Construction for railway span (NAV1)

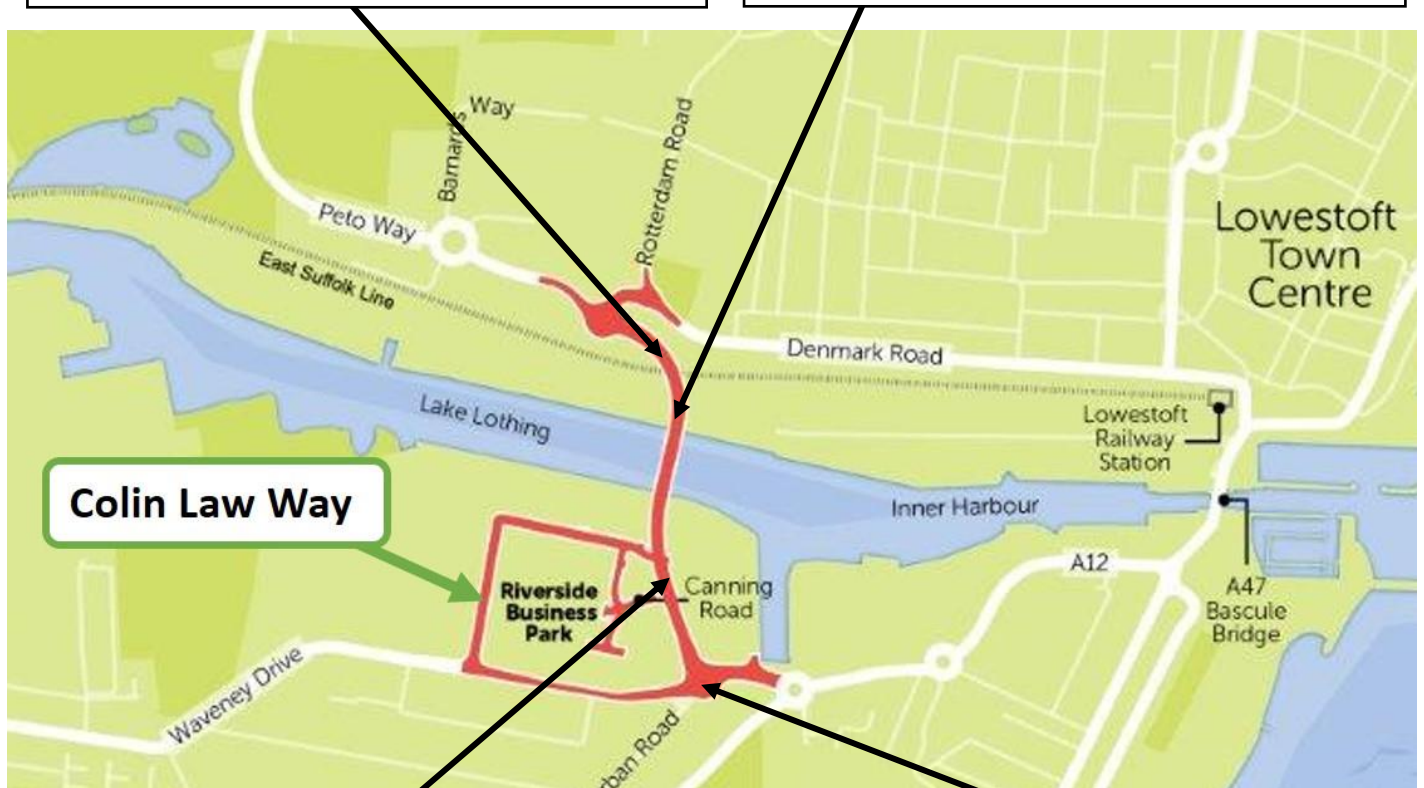
Recent Site Achievements – Around the Site



A - North Approach – Deep Soil Mixing



B – Pier 6 Pile Cap



C – Control Tower Plant Room



D – Southern Roundabout Works

A

Northern Approach – Deep Soil Mixing

Deep Soil Mixing is being undertaken to strengthen and stabilise the native soils on the northern approach by creating hundreds of soil cement piles. These will provide support to the Northern Approach embankment which will be constructed when this work has been completed.

B

Pier 6 Pile Cap

Works to Pier 6 continues with the pouring of the concrete pilecap now completed. The application of the black waterproofing sealing coat can also be seen which helps to protect the concrete.

C

Control Tower Plant Room

The construction of the Control Tower plant room is underway. Work is currently creating the reinforced concrete walls and floor for the plant room, which will house the mechanics and power for the bridge lifting system.

D

Southern Roundabout Works

Work is progressing with the Southern Roundabout and the approaches to it, following the recent diversion of traffic onto the newly opened Colin Law Way.

Pier 4 and Pier 5 Marine Works



We've been joined by specialist divers from local company [Norfolk Marine Ltd](#)

In the cofferdam on Pier 4 they are doing underwater works to prepare for the concrete wet plug to be poured, which will enable us to pump dry the area within the cofferdam.

Waveney Drive Pedestrian & Cycle Access

We would like to share the current pedestrian and cycle access to Riverside Business Park. This includes access to the Lowestoft Registry office in the Riverside Business Centre. The plan shows the routes from all directions.

We are maintaining this access at all times but please follow the signage on site for your own safety, in particular near Tom Crisp Way. The through route for both cyclists and pedestrians is along the south of the roundabout near Asda to the crossing over Tom Crisp Way.

Detailed pedestrian/cycle access to businesses on Riverside Business Park

Key

- Pedestrian/Cyclist Route
- Road Closure

For pedestrian access from the Council's visitor car park to the main offices, please follow signage

Pedestrians/Cyclists travelling east on Waveney Drive will need to:

- Turn left to follow the footpath adjacent to Riverside Children's Centre to access the various businesses
- Colin Law Way can be used to access Suffolk County Council and East Suffolk Council



Pedestrian/Cycle access to Lings ONLY

Construction Zone for the new roundabout.

Cyclists to dismount when travelling through the pedestrian footpath.

Pedestrians/Cyclists travelling west from the A12 will need to:

- Cross at Tom Crisp Way and follow the southern footpath,
- Follow the signed pedestrian route through the construction zone,
 - Join Waveney Drive,
- Turn right to follow the footpath adjacent to Riverside Children's Centre to access the various businesses

Community Volunteering Event



At the end of June, some of the team took part in our third community volunteer event. This time we helped at Re-Utilise Community Repaint & Scrap Store by improving a pretty grim wall. We were pleased to assist such a great project. See below images from the day.

Re-Utilise offer a community scrap & paint store, as well as courses in various arts and craft. Visit their website at www.re-utilise.com



Education – T-Levels



Over the past month, across the Gull Wing Project, we have been supporting a student from City College Norwich in her T-Level in Design, Surveying and Planning for Construction.

T Levels are a new two-year course that follows on from GCSEs, providing an alternative to A-Levels and apprenticeships.

Over the two-year Programme of study, students are required to dedicate 20-30% of their time to practical experience gained with an employer as part of an industry placement.

On the Gull Wing Project, the placement involved a rotation around each of the different sections of work: Marine, Structures, Highways, Quality and Commercial, giving an insight to areas of civil engineering projects such as health and safety, reading and using drawings and different construction methods.

Find out more about T-Levels here: <https://www.tlevels.gov.uk/>

Further Information and Contact Details

For more information on Gull Wing, visit www.gullwingbridge.co.uk

You can email the project team at info@gullwingbridge.co.uk or telephone 01502 512779

If you no longer wish to receive updates about the Gull Wing bridge please email us on info@gullwingbridge.co.uk and we will remove you from the mailing list.

Follow us on :

Twitter - [@gullwingbridge](https://twitter.com/gullwingbridge):

Facebook – [Gullwingbridge](https://www.facebook.com/gullwingbridge):

Instagram - [Gullwingbridge](https://www.instagram.com/gullwingbridge)

For up-to-date information about roadworks in Lowestoft, please visit one.network

Improving the image
of **construction**

This site is registered with the Considerate Constructors Scheme
For more information call: 0800 783 1423 visit: www.ccscheme.org.uk

