

LOWESTOFT

April 2022 Newsletter

Welcome to our latest newsletter. Work on site is continuing well, with construction on both sides of Lake Lothing, and in the water progressing.

This month's newsletter will give an update on some of the works on the project, and key information on a new access road opening

We are always happy to hear from you so please see our contact details at the end of the newsletter.

NAV 1 Update



Scaffolding is now being erected around the Northern Approach Viaduct section 1 (NAV1) that is currently sitting on a platform near to the rail line. The next stage is for installation of permanent formwork concrete planks to be laid onto the steelwork. Then reinforcing steel cages will be added before concrete is poured in to create the deck slab that will form the foundation of the tarmac road. The scaffolding that can currently be seen around the NAV1 steel structure has been erected to provide a safe working area for the people that will be working on the structure.

These next stages of work will be taking place over the next couple of months.

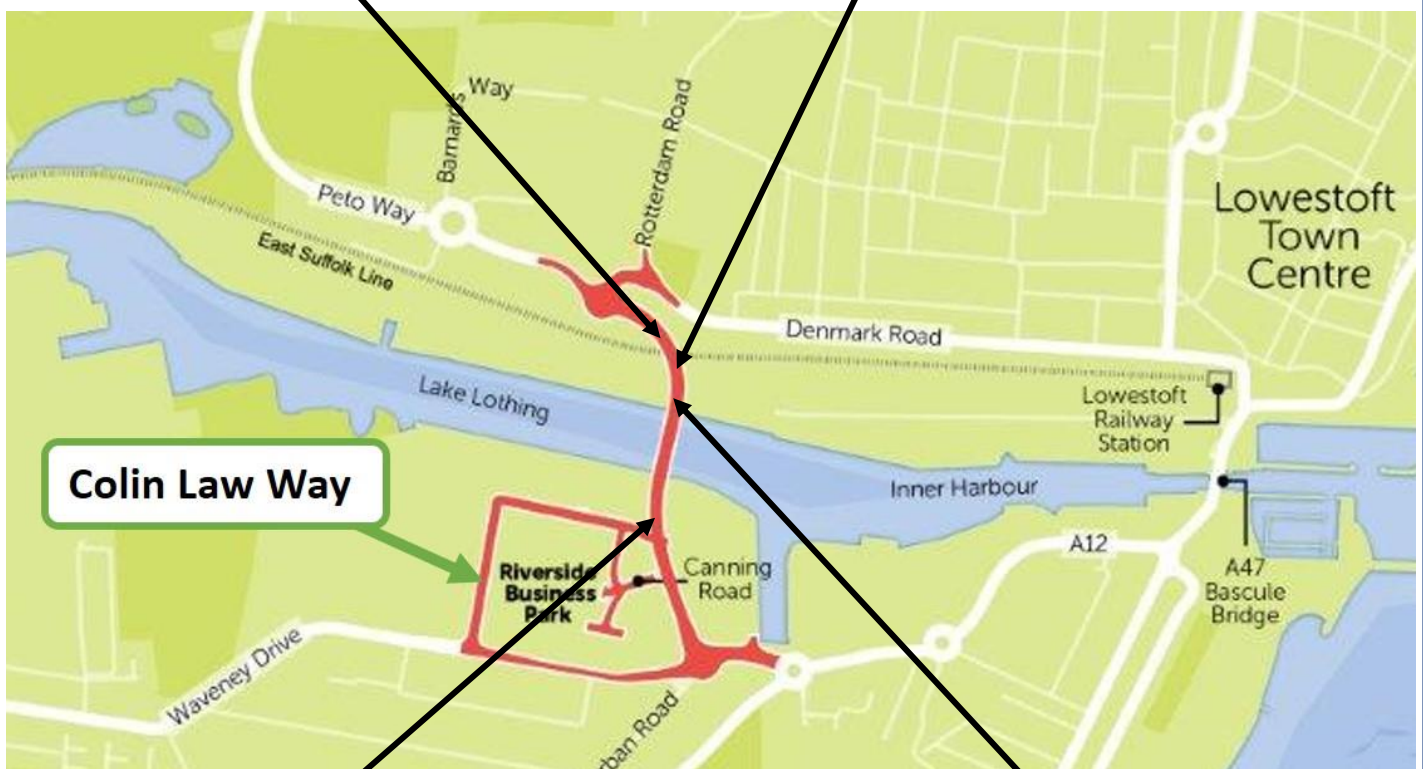
Recent Site Achievements – Around the Site



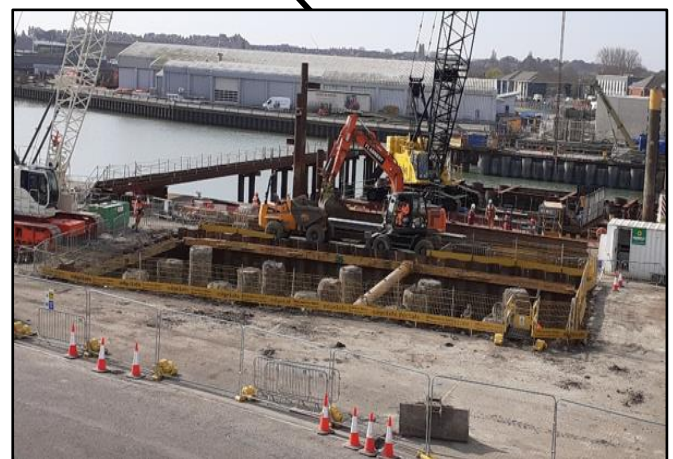
A - North Abutment Concrete Pour



B - Pier 7 – Reinforcing steel



C – Pier 2 – Concrete Finished



D – Pier 6 – Excavation

A

North Abutment – Concrete Pour

The North Abutment, on the northern side of the rail line, is made up of a series of walls, the first of which now has had its concrete pour, with the other walls having the reinforced steel erected.

B

Pier 7 – Reinforcing steel

Pier 7 is on the southern side of the railway and will also support the NAV1 bridge span when completed. It has now had the shuttering erected and concrete was poured on 25th April.

C

Pier 2 – Concrete Finished

Pier 2 has now had all its shuttering removed and has been cleaned up to give it its final concrete finish.

D

Pier 6 - Excavation

Now NAV 1 has been safely moved from barge across the quay we have now been able to continue works with Pier 6, which is on the northern quayside. The piles have been completed, and the area is now being excavated to allow the piles to be cropped, and the concrete base poured.

COLIN LAW WAY OPENING TO TRAFFIC



We will soon be opening the new Colin Law Way permanent access road into Riverside Business Park. The opening of this road will also enable us to progress with the construction of the new roundabout and the southern approach embankment for the bridge.

The existing Riverside Road will be closed for traffic permanently on **Monday 9 May at 06:00**. This means that access into the business park will therefore be only from Colin Law Way, altering the local traffic flows. Most construction traffic associated with the Gull Wing Bridge project will also use Colin Law Way.

Colin Law Way will be fully operational for traffic, cyclists, and pedestrians on **Monday 9 May at 05:00**. All traffic will access Colin Law Way from the western end of Waveney Drive until the new roundabout is complete – due Summer 2022.

Please see below for a detailed plan of the new road layout, road closures and the official signed diversion route for traffic. This route will sign traffic from Riverside Road, down the A12 (Tom Crisp Way) to the Bloodmoor Roundabout, exiting on Elm Tree Road through to Cotmer Road. Road users can then follow the A146 (Bridge Road) to join Victoria Road and use this to access Waveney Drive and Colin Law Way from the west.

Please note that Lings Motor Group will now have new permanent access at the eastern end of Waveney Drive, adjacent to the Tom Crisp Way roundabout.

Changes to permitted working hours

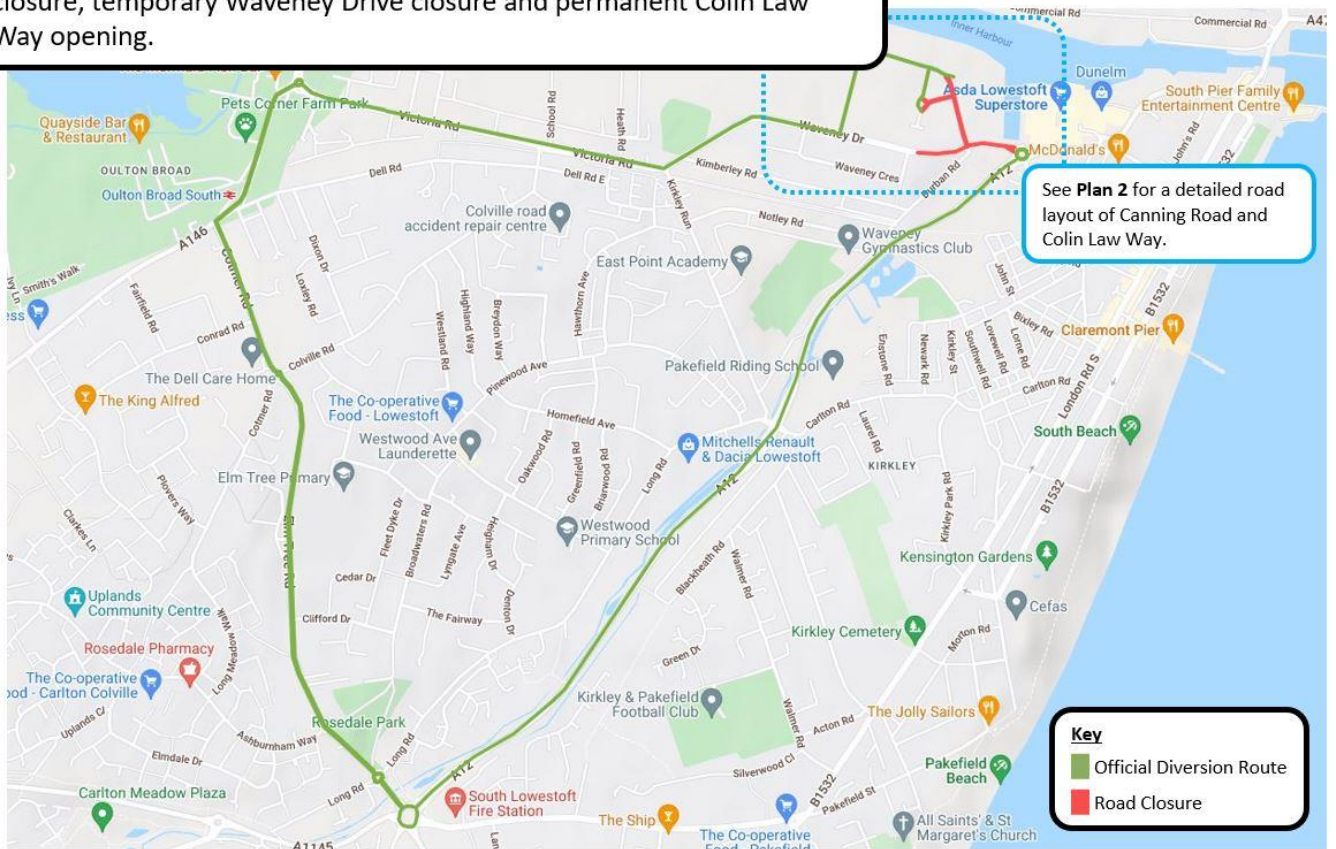
To further facilitate progress on the new roundabout (to be located at the junction of Riverside Road, Durban Road, and Waveney Drive) we have also been permitted to carry out additional weekend working in this area on every other Saturday and Sunday until completion. Our additional permitted working hours will be from 08:00 to 16:00 both days.

Two-way cyclist and pedestrian access will continue to be available through the Waveney Drive closure. Cyclists must dismount when travelling through the Riverside Road closure - please refer to Plan 2 below for further detail and follow all pedestrian and cyclist signage.

If you require any more information about these works call Farrans on the 01502 512779 helpline or alternatively email info@gullwingbridge.co.uk.

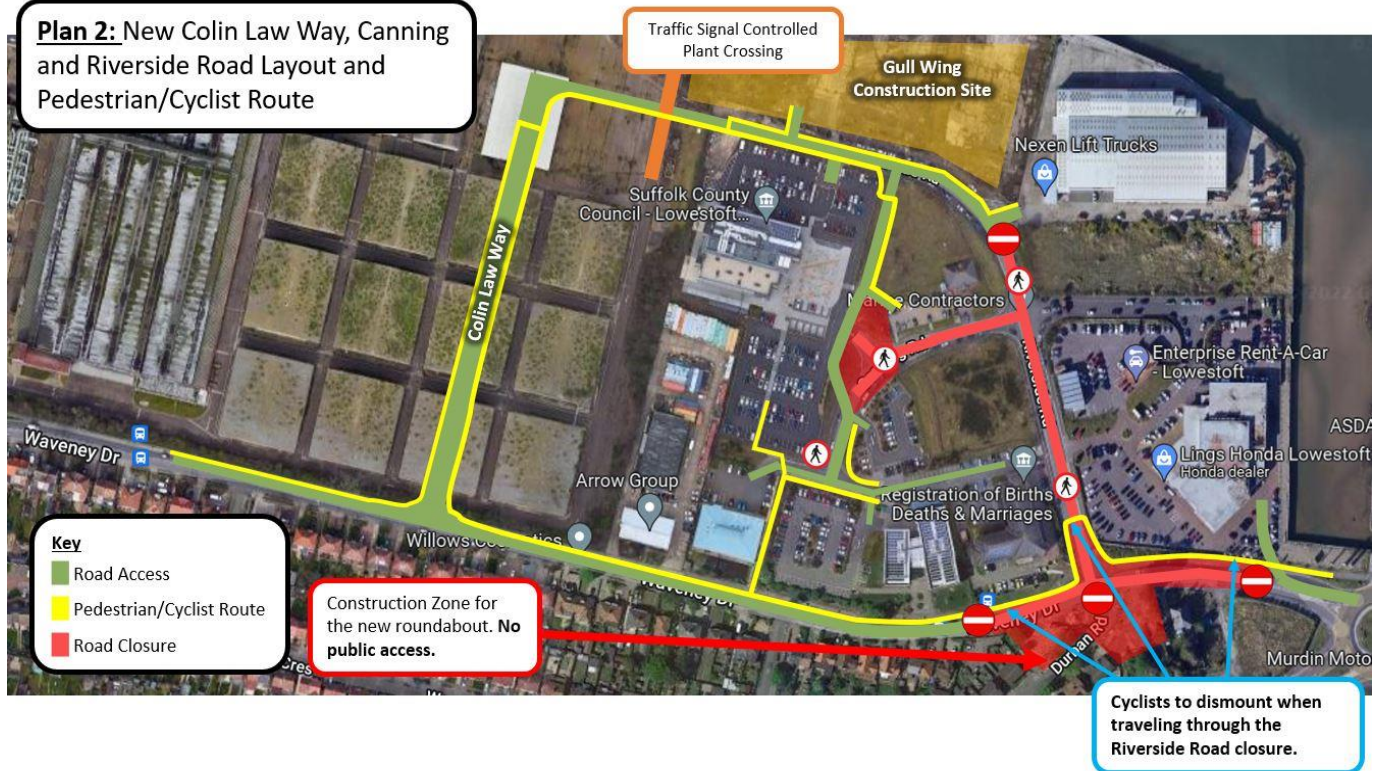
PLAN 1

Plan 1: Official signed diversion route for permanent Riverside Road closure, temporary Waveney Drive closure and permanent Colin Law Way opening.



PLAN 2

Plan 2: New Colin Law Way, Canning and Riverside Road Layout and Pedestrian/Cyclist Route



OTHER UPCOMING WORKS



- Marine Rotary Bored Piling continuing on to Piers 4
- Bridge Pier Construction:
 - North Abutment - Walls
 - Pier 7 – Wall
 - Pier 6 – Pile Cap
- Completion of Drainage & Services for Southern Access Roads
- Completion of final Utility diversions
- Completion of Lings new permanent entrance from Waveney Drive.
- Start soil stabilisation works for Northern Approach Embankment

EDUCATION OUTREACH EVENTS



Delivering Social Value is at the centre of Farrans' core vision, mission, and Company values. It is their aim to leave a lasting legacy to the local communities in which we operate. As part of their bespoke Social Value Delivery Plan, throughout March and April, the Farrans Community Benefit team have been busy visiting local primary schools to speak to Key Stage 2 students about this exciting project on their doorstep.

In the recent sessions, students are introduced to the project, told some key facts, and it is discussed why we are building the Gull Wing in Lowestoft. The second part of the session discusses the history of Lowestoft's bridges and how they have been replaced and improved over the years to keep up with the economic and population growth of the town, we talk about things from the fishing industry to the influence of Samuel Morton Peto.

Thank you to Somerleyton, Woods Loke, Blundeston, Corton, Westwood, Grove and, Pakefield Primary Schools for inviting us in to speak to you!

SOCIAL VALUES – OUTREACH UPDATE

Educational Outreach Figures

7

Careers Talks / Open Events Attended

3

Site Visits held for Local Students

12

Laptops donated to Local Secondary Schools

13

Primary & Secondary School Sessions delivered

66

Staff Hours dedicated to local School and College visits

1032

Approximate No. of Local Students reached through outreach events.

Community Outreach Figures

2

Community Volunteering Events held:

- *Kirkley Pantry: Interior and exterior painting, vegetation clearance, installation of a new path and a new gate*
- *Woods Meadow Country Park: Planting of Oak Trees*

95

Staff hours dedicated to volunteering events.

Next quarterly community volunteering event will be held on 28th June. We will be painting the exterior of Re-Utilise Community Repaint & Scrap Store

Meet the Team



Hi, my name is Eddy and I am the Project Support Analyst and Administrator for Gull Wing at Suffolk County Council. I have been on the Gull Wing project since 2017, initially working on the Public Consultation, following a background in Customer Services and Administration for various shipping companies as well as in the insurance sector. Once the consultations were finished, I then moved into my current Project Support role for Suffolk County Council, handling the majority of the administrative tasks, as well as assisting with communications. The bulk of this work is behind the scenes, including upkeep and maintenance of the project website, handing internal communications and creation of this monthly newsletter. Seeing how much this project has grown from consultation stage to watching the creation of Colin Law Way and the piers sprouting out of the ground is truly amazing and gives me a feeling of working with something very special.

Further Information and Contact Details

For more information on Gull Wing, visit www.gullwingbridge.co.uk

You can email the project team at info@gullwingbridge.co.uk or telephone 01502 512779

If you no longer wish to receive updates about the Gull Wing bridge please email us on info@gullwingbridge.co.uk and we will remove you from the mailing list.

Follow us on :

Twitter - [@gullwingbridge](https://twitter.com/gullwingbridge):

Facebook – [Gullwingbridge](https://www.facebook.com/Gullwingbridge):

Instagram - [Gullwingbridge](https://www.instagram.com/Gullwingbridge)

For up-to-date information about roadworks in Lowestoft, please visit one.network

Improving the image
of **construction**

This site is registered with the Considerate Constructors Scheme
For more information call: 0800 783 1423 visit: www.ccscheme.org.uk

