



2021 Year End Newsletter

We can't quite believe that 2021 is nearing its end, and that we've been working 9 months on site! Our teams have been working incredibly hard and some of the bridge structures are starting to emerge, both on land and in the lake itself. Recently the Pier 3 pilecap received the largest concrete pour of the project to date. You may also have seen the project featured on BBC Look East in November.

We would like to thank you for your support for the project, and for your patience if you are directly impacted by any of our works. We hope you all stay safe and have a good Christmas and a Happy and Prosperous 2022. We are looking forward to seeing the Gull Wing really start to take shape next year.

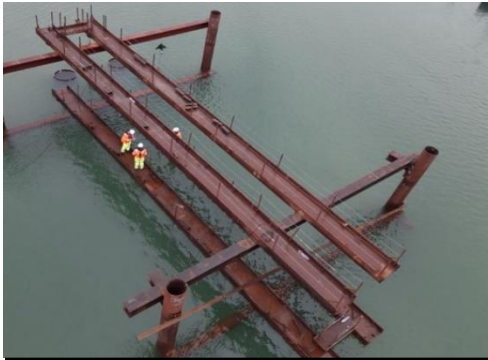
Recent Site Achievements

- Pier 3 – Pile cap concrete pour over two days in November
- Piling work for Pier 2 and pile cap poured
- Cofferdam being constructed for Pier 5.
- Earthworks and retaining wall construction continuing for Colin Law Way
- Completed the move of the 33kv power cable from under Riverside Road, this is the first of the utility diversion works to be finished on the project
- A substation has arrived on site to allow an existing one near Nexen to be removed and Pier 1 to be started

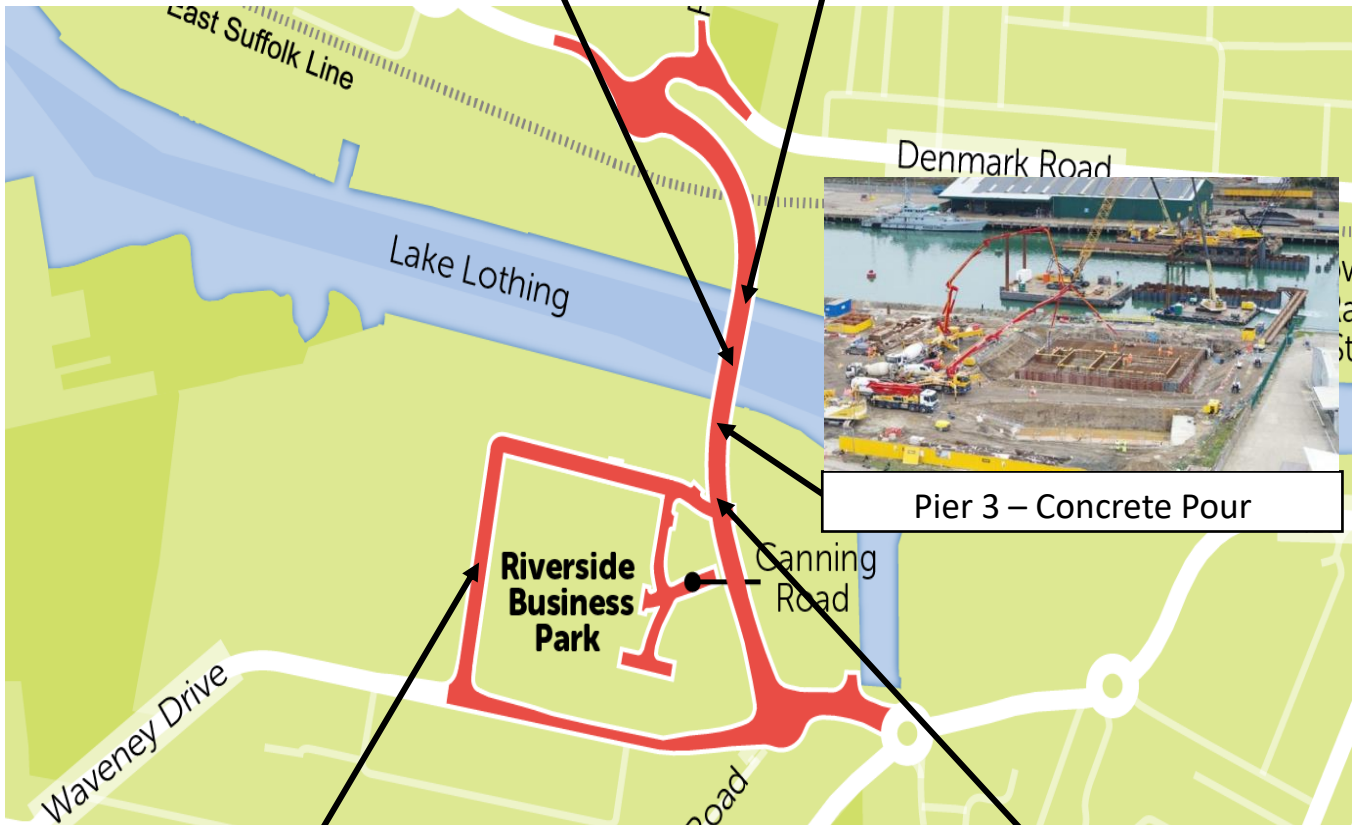
Around The Site



Pier 4 – Bearing Piles Testing



Pier 5 Cofferdam



Pier 3 – Concrete Pour



Colin Law Way - Earthworks



Pier 2 - Progress

Pier 3 – Concrete Pour



On 16 Nov the team was working on one half of pier 3 (south side) where the 64 in-ground piles have now been capped with a steel cage (22m x 27m x 2m). Concrete began arriving at site at 7am, and we poured 574m³ by the end of the day. Each load of concrete arriving at site is tested so it meets the specification and samples are taken for follow up testing. This pour was continued on 30 November so the entire pile cap is now complete.

See our drone footage of the operation and check out overall site progress.

<https://youtu.be/kEzF3znJu1s>

Meet the Team



Hi my name is Andy, a Senior Engineer, working for Sharp Contract and Surveying alongside Suffolk County Council. I started on the Gull Wing team in October, but I have been working within Engineering and Project Management for over 20 years, including numerous major highways and structural schemes. My role mainly involves monitoring works on site to check that everything is being completed in accordance with the design specifications. This also involves looking at issues that arise and assisting in coming up with workable solutions.

I know the town well as I am from the surrounding area. I can see the iconic structure will allow traffic to pass through without adding to congestion in the town centre, and it will allow people to move around within the local area easier which will all benefit local businesses and boost the local economy.

BBC Look East



Council leader Councillor Matthew Hicks was in front of the camera in November as he was interviewed by BBC Look East reporter Robbie West about progress on the Gull Wing bridge construction project in Lowestoft.

Also interviewed were Tristram Browne and Neil Rogers of Farrans Construction, who are building the bridge, and workers Alex Wallis-Evans and Aqib Khan.

Alex is a geo-technical engineer with Arup and Aqib is a graduate engineer with Farrans Construction, and both spoke about their roles in the exciting development of a new bridge for the town.



Upcoming Works

- Further progression with Colin Law Way
- Work continuing on Pier 7 and North Abutment
- Rotary bored piling for Pier 4
- Continue work on Pier 5 Cofferdam
- Ongoing utility diversions

Road Closure

We currently have a planned road closure of Denmark Road and Rotterdam Road. The closure and diversion route is shown on the plan. These roads will reopen by 21st December, and will remain open through the Christmas and New Year period.

This allows Essex and Suffolk Water to do some essential utility diversions – needed for construction of Gull Wing. Please note that pedestrians and cyclists will continue to have access through the closure.

Due to obstructions found underground once the work began, Essex and Suffolk Water will need to return to continue the work on 4th January. This work will impact Rotterdam Road for up to 3 weeks. Denmark Road will be open to traffic, with traffic light controls for the final week. Thank you for your patience and co-operation while these works are underway.



Christmas and New Year – Site Closure

The site will be closing for the Christmas break on Friday 17th December. Work will restart on Tuesday 4th January. During this period there will be site security and the traffic management will be regularly checked. If you need to contact the team the phone number will be monitored 01502 512779

Social Values Update

3

**Apprenticeship
Positions Filled**

7

**Graduate
Positions Filled**

4

**New Full Time
Positions Filled**

(NEET, LTU, Local Job Seekers and
Education Leavers)

9

**Kickstart /
Kickstart+
Positions
Advertised**

2

**Meet the Buyer
Events Held**

35

**Local Primary,
Secondary Schools and
Colleges contacted for
School Engagement**

11

**Talks confirmed /
delivered to local
Schools and
Colleges**

22

**Local groups contacted
for Community
Engagement and
Volunteering
Opportunities**

42

**Local Farrans
employees on the
Project so far**

£605,625

**Spend so far locally
on Accommodation
and Food (Average)**

52

**Local Suppliers /
Sub Contractors
on Supply Chain**

271

**Local People worked
on the Project so far**

'Local' = Within 70 Miles of Site

Further Information and Contacts

If you no longer wish to receive updates about the Gull Wing bridge please email us on info@gullwingbridge.co.uk and we will remove you from the mailing list.

Follow us on : Twitter - [@gullwingbridge](https://twitter.com/gullwingbridge): Facebook – [Gullwingbridge](https://www.facebook.com/Gullwingbridge):

For up-to-date information about roadworks in Lowestoft, please visit one.network

Improving the image
of **construction**

This site is registered with the Considerate Constructors Scheme
For more information call: 0800 783 1423 visit: www.ccscheme.org.uk

