



## SEPTEMBER 2021 UPDATE

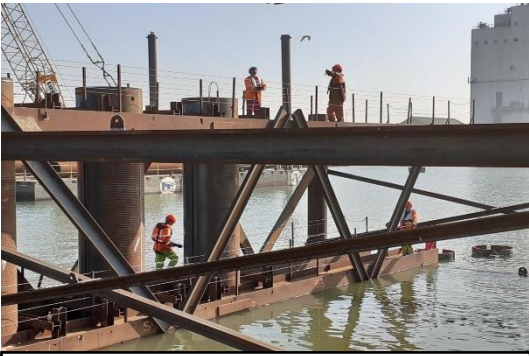
Welcome to our latest newsletter. Work on site is continuing well, with progress both in and out of the water. Read more about the latest parts of the construction here.

As always, we're happy to hear from you – see the contact details at the end of the newsletter.

### Recent Site Achievements

- Work Started on Pier 4 Cofferdam
- Marine Dolphin piling work complete on the NE and SE Side
- Lings Retaining Wall – Concrete pouring complete
- Sheet piling installed near rail line on the North side.
- Drainage works commenced for new Colin Law Way
- Car Parking bays installed on Notley Road

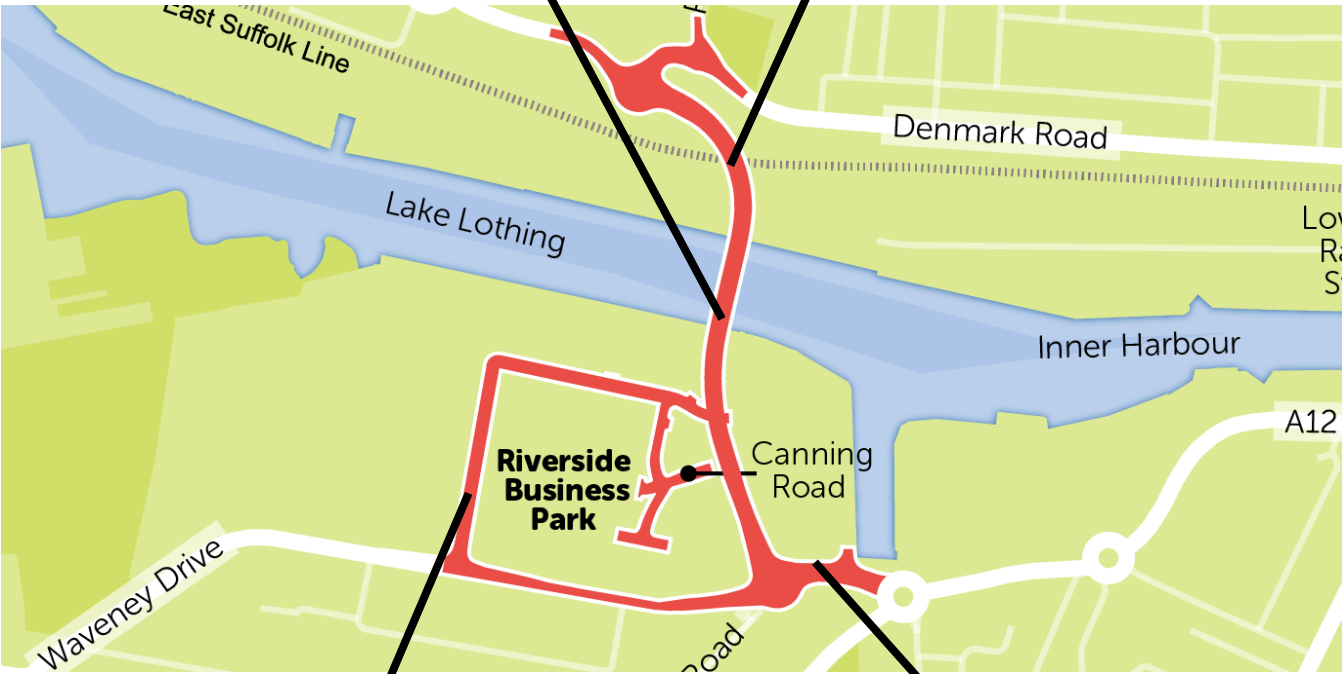
# Around The Site



Pier 4 Cofferdam started



Network Rail – Sheet Piling Installed



Colin Law Way – Drainage



Lings Wall – Concrete Pouring

## Pier 3 Works - Update



The concrete pilecap for Pier 3 (on the south quay) will sit on top of 64 concrete piles and carries the combined weight of the control tower building and plant room as well as the bridge itself. All piles have now been constructed and tested. The next step is preparing for the construction of the pilecap. This involves excavating and cropping the tops of the piles to the final level and installing the reinforcing bars and shuttering so that the concrete pilecap can be poured. This work has recently commenced, and it will take several weeks. When completed, the pilecap will be one of the first visible signs that the bridge is emerging from the ground.

## Marine Construction Guide



After a long period of planning and preparation, the first marine construction works started on 10<sup>th</sup> August when the first pile was installed into Lake Lothing. A pile is a cylinder type foundation inserted into the ground to support heavy loads.

There will be a series of different marine construction activities using a variety of specialist machinery and vessels over the next year or so. The first piles, which are currently being installed, are for the Dolphin Fenders that will protect the bridge against vessel impact. This is using a low vibration rotary push method because we are working very close to an underground tunnel. These dolphins comprise of 28 steel tubes that will be filled with stone and concrete. Those on the eastern side of the bridge are being installed first and are almost completed. The piling rig is located on a Jack Up Barge and is serviced by a crane barge (see our Crane Guide at [General Information – Gull Wing Lowestoft \(gullwingbridge.co.uk\)](http://gullwingbridge.co.uk) for more information).



## Meet the Team



Hi, my name is Eddie, and I am the Community Business Partner for Farrans. I have been with the Gull Wing project since August this year, moving from Network Rail as the Community Engagement Manager for the Southern region. My role on this project requires working with stakeholders, schools, businesses, residents, and all other aspects of the community, looking at how we can deliver our social value promise.

Lowestoft is in desperate need for the bridge, as it will be great for residents, the community and businesses helping to relieve traffic congestion in the town, regenerate the area, bring new job opportunities to the town as well as provide work for local businesses. In particular, the community involvement and collaborative work is what excites me about the project.

Rosie, who some local residents and stakeholders will have met previously, is now on maternity leave.

You can email the project team at [info@gullwingbridge.co.uk](mailto:info@gullwingbridge.co.uk) or telephone 01502 512779

## Meet the Team



Hi, my name is Kishan, and I am a Graduate Quantity Surveyor working for Farrans on the Gull Wing Bridge. This is my first role with Farrans

As a Quantity Surveyor (QS), I manage the costs and control the budget of the project. QS's also deal with the legal issues of a project. I previously worked in a consultancy acting as a monitoring surveyor on behalf of banks and assisted senior colleagues acting as an Employer's agent on construction projects. I always had a passion for construction, this led me to continuously visiting places synonymous with grand buildings, i.e., Vatican City, Cambridge, and York. It is now a great pleasure to be in a pivotal role within a unique construction project, helping to shape the future of Lowestoft.

## Social Values

**41** Local Companies on the Supply Chain (Within 70 miles of Site)

**3** Full Time Positions Filled (NEET, LTU, Local Job Seekers & Education Leavers)

**7** Graduate Positions Filled

**19** Local Groups contacted for Community Engagement & Volunteering Opportunities

**317** People worked on the Gull Wing Project so far

**3** Apprenticeship Positions Filled

**£400,000+** Spent so far locally on Accommodation and Food

## Further Information and Contacts

For more information on Gull Wing, visit [www.gullwingbridge.co.uk](http://www.gullwingbridge.co.uk)  
You can email the project team at [info@gullwingbridge.co.uk](mailto:info@gullwingbridge.co.uk) or telephone  
01502 512779

If you no longer wish to receive updates about the Gull Wing bridge please  
email us on [info@gullwingbridge.co.uk](mailto:info@gullwingbridge.co.uk) and we will remove you from the mailing  
list.

Follow us on

Twitter - @gullwingbridge: [Gull Wing - Lowestoft \(@gullwingbridge\) / Twitter](https://twitter.com/gullwingbridge) or  
Facebook – Gullwingbridge: [14 Gull Wing Bridge | Facebook](https://www.facebook.com/gullwingbridge)

For up-to-date information about roadworks in Lowestoft, please visit