



## AUGUST 2021 UPDATE

Welcome to our August 2021 Gull Wing Newsletter! Things are getting very busy on site, and we've been making some great progress during the past month, which we're excited to share with you in this issue.

We're sure that you may have noticed some extra traffic and roadworks as well, which unfortunately is a necessary part of construction but we're doing our best to keep any noise and disruption to a minimum and will try to give as much advance notice as we can.

As always, we're happy to receive feedback on how we're doing, so please do get in touch.

## July 2021 – Site Achievements

- Land Piling for Piers 3 and 2 on South Side completed
- Lings Retaining Wall – Excavation work completed
- Mobilisation of Marine Jack-Up Barge & Piling Rig
- Official Site Office Opening by Cllr Matthew Hicks - Leader of Suffolk County Council
- 2<sup>nd</sup> Successful "Meet the Buyer" event took place

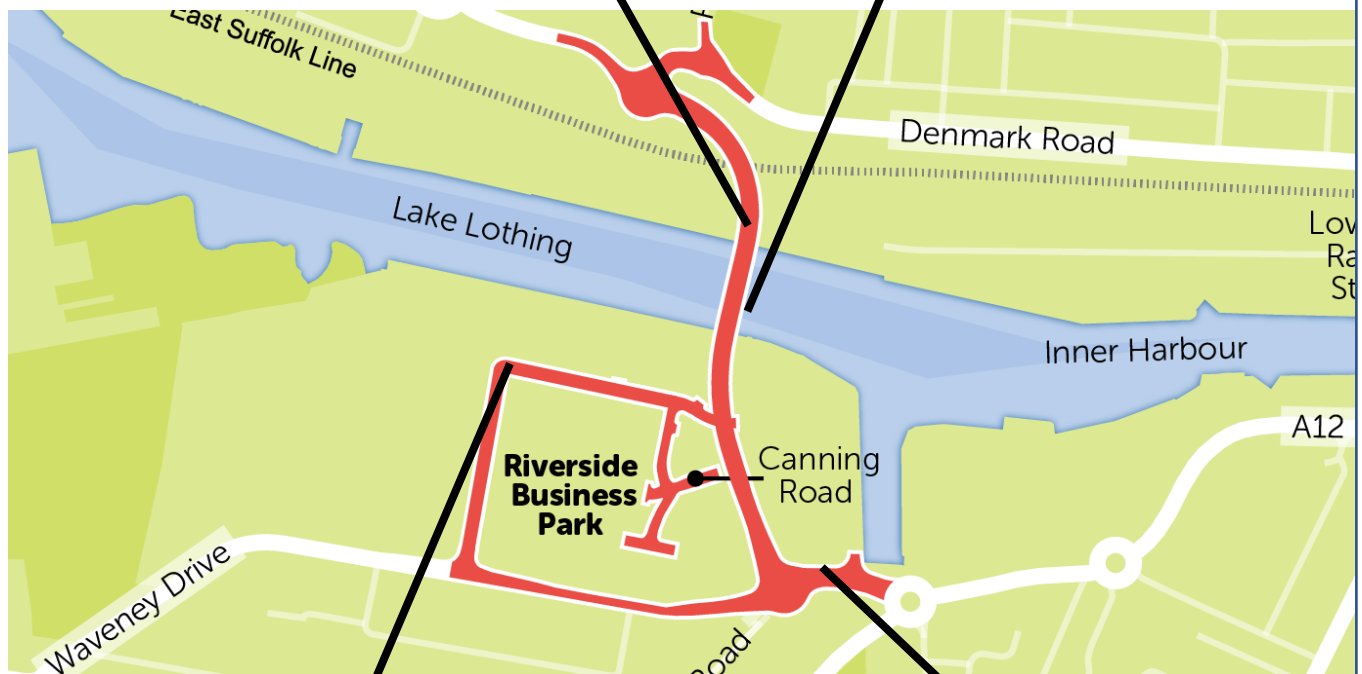
## Around The Site



Piling Preparations – North Quay



Marine Piling Works



Official Site Office Opening



Lings Retaining Wall - Rebar



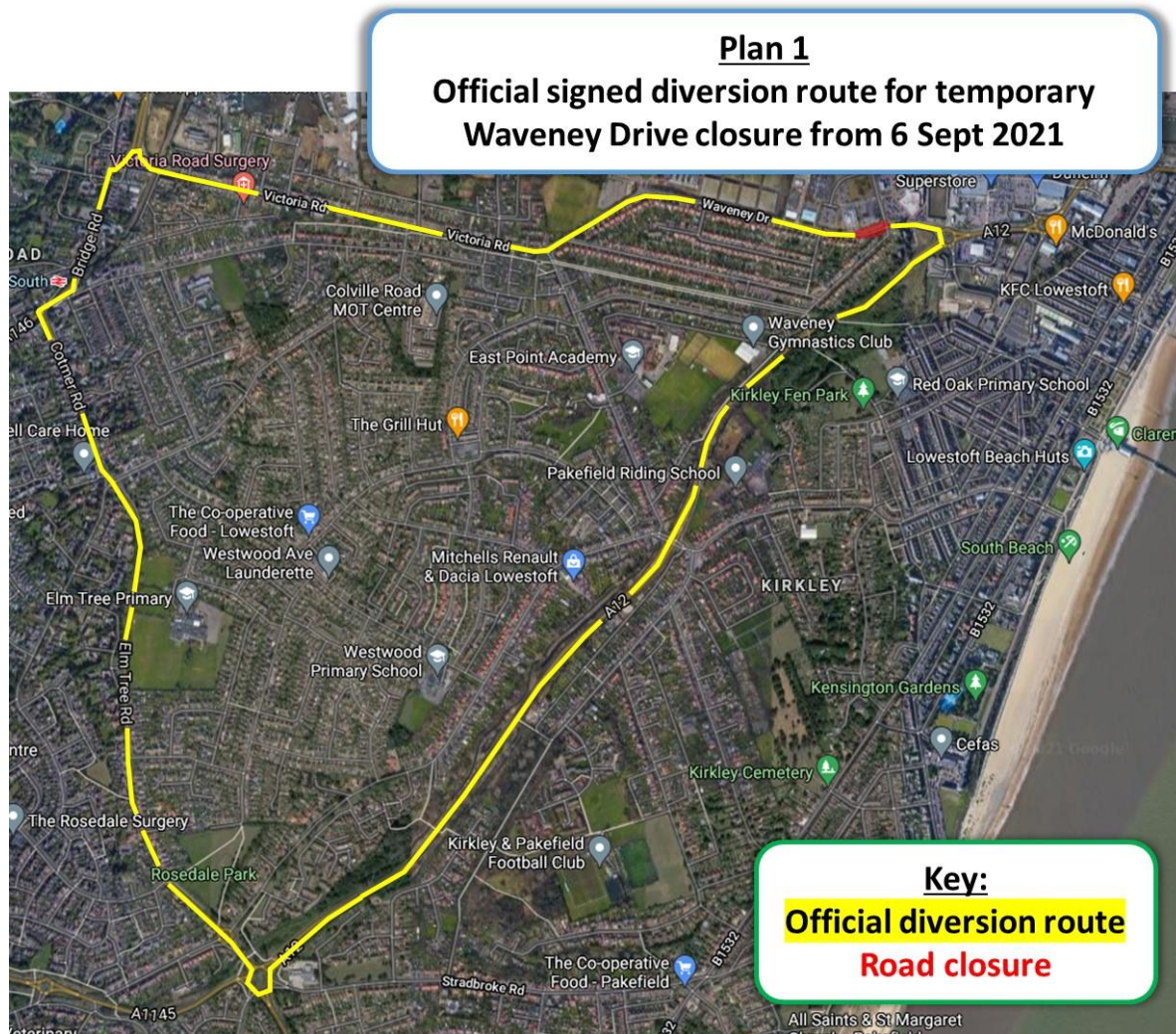
# Waveney Drive Traffic Management

We are pleased to say construction of the bridge and surrounding highway works are progressing well.

We are aware that some people are experiencing disruption and delay as part of these works, particularly on Waveney Drive. This has been unavoidable due to critical utility diversions and the construction of the new Southern roundabout and access routes. We apologise for the inconvenience caused by the traffic management on Waveney Drive, and appreciate your patience as we continue this work.

We have been monitoring the current situation and have been considering options to help ease the congestion along Waveney Drive with the aim to reduce disruption. We have concluded that implementing a full temporary road closure of a small section of Waveney Drive will lessen the impact of these works.

We plan to close Waveney Drive from Monday 6<sup>th</sup> September 2021 until end of July 2022. This is from the Riverside / Waveney Drive junction through to 44 Waveney Drive - see Plan 1 below. Pedestrians and cyclists (who will need to dismount) will continue to have access.



To avoid the need for traffic lights, full access to residential properties on Waveney Drive and Waveney Crescent will be maintained from the west end of Waveney Drive junction with Kirkley Run, using a one way system around Waveney Crescent. See Plan 2.



### Plan 2

#### Access to Waveney Drive and Waveney Crescent during Waveney Drive closure



Full access to Riverside Road and the businesses will be maintained from Waveney Drive (Tom Crisp roundabout). This will be two-way traffic which will enable us to remove the current traffic lights. See Plan 3.

### Plan 3

#### Riverside Road access during Waveney Drive closure



If you require any more information about the project or the above road works please visit [gullwingbridge.co.uk](http://gullwingbridge.co.uk) or if you wish to raise a question or make a comment call Farrans on the **01502 512 779** helpline or alternatively email [info@gullwingbridge.co.uk](mailto:info@gullwingbridge.co.uk).

## Marine Piling Works



The marine piling works are now underway, and we have been busy preparing for the past few weeks.

Recently the 'Claude Monique' Crane Barge has arrived on site. This will stay on site for the next couple of years to help with the work.

We have also been assembling two large 250T Crawler Cranes. The one on the North Quay will be placed onto another crane barge, and the one being assembled on the South Quay will remain on land and will be used to pass materials over to the piling operation. There is also a large jack up barge in the Lake to assist the marine works.

## Second Meet the Buyer Event



On Tuesday 8<sup>th</sup> August, Suffolk Chamber of Commerce, Farrans and Suffolk County Council hosted a second Meet the Buyer event for the Gull Wing project.

This event was held at Ivy House Country Hotel in Lowestoft.

Over 30 companies, mainly from the local area, gathered to show their interest in bidding for the remaining packages of work on the project.

The event was a great success and we wish to thank the Team at Suffolk Chamber of Commerce for organising, and Ivy House Country Hotel for hosting.



## Commercial Road Traffic Management



We are installing temporary double yellow lines on a narrow section of Commercial Road during the week of 16th August 2021. An increase in construction traffic is expected as our focus switches to work for the section that will cross the East Suffolk railway. To ensure safety for road users and pedestrians, and minimise traffic delays for others, we will be implementing parking restrictions from Numbers 20 to Oceanview Building (Please see map above).

This section of road is narrow and when cars are parked along this section of Commercial Road two HGVs cannot safely pass. The new parking restrictions will ensure two way flow is maintained for HGVs along the length of Commercial Road.

If you require any more information about the project or the above road works, please visit **[gullwingbridge.co.uk](http://gullwingbridge.co.uk)** or if you wish to raise a question or make a comment call Farrans on the **01502 512 779** helpline or alternatively email **[info@gullwingbridge.co.uk](mailto:info@gullwingbridge.co.uk)**.

## What's Happening Next?

### Upcoming Works

- Marine Piling work to continue with the dolphin piles and commence cofferdams.
- Commercial Road – temporary yellow lines at narrowest point
- Land Piling works on North Side with the North Abutment and Pier 6 (adjacent to the railway)
- Lings Retaining Wall - Installation of Reinforcing steel
- Colin Law Way - Drainage Works and Embankment Filling
- Notley Road – car parking spaces being installed on corner with Durban Road

## Meet the Team

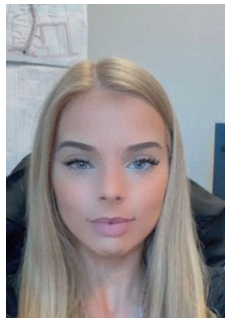


Hi, I am Aqib and I am an Assistant Engineer working for Farrans on the Gull Wing Bridge. I work in the Engineering department assisting with the construction of CFA piling which is currently taking place on the Quayside, and is the main part of the current structural works.

I am local to the project, having lived in Lowestoft for almost 2 years after moving here from India. I was previously working on infrastructure projects in India including a major tunnel project in Kashmir.

This is my first engineering position in the UK and this is a dream project for me as it involves new challenges. The project is unique in its design and it involves different aspects of engineering both structural and marine. I am excited by the marine elements that have not been part of my career experience. I have waited for this opportunity for 2 years as Covid restrictions meant I couldn't begin my career here when I arrived, so I am pleased and very lucky to be involved in the Gull Wing Project.

As a local resident, I know that there is a great demand on the current traffic moving through the town. The completion of the bridge will improve the lives of local people and there will be greater opportunities in employment and moving through the town will become easier for residents and local industries.



Farrans have recently taken on another recruit, Zoe Prescott, who will be completing her Level 3 Apprenticeship in Business Administration.

Zoe, who lives very local to the site, is from Lowestoft, and found the role via Apprenticeships Suffolk.

She will be supporting the team for the full duration of the project, will gain experience and knowledge from the whole team, to help with her Apprenticeship.

Zoe, who is new to the construction industry, said '*This is a new experience for me, I am very excited to join the Farrans team, and to work on a large project such as the Gull Wing bridge, and to see an improvement in the local area*'

For further information about Apprenticeships Suffolk, visit [www.apprenticeshipssuffolk.org](http://www.apprenticeshipssuffolk.org)

We are looking for Level 5 and 6 Apprentices in Engineering and Quantity Surveying. If you're interested in any of the apprenticeship opportunities, work experience or any other employment opportunities, please email [info@gullwingbridge.co.uk](mailto:info@gullwingbridge.co.uk).

## Social Value

**15** Local people recruited to work as staff on full term contracts

**39** Local Companies on the Supply Chain (Within 70 miles of Site)

**3** Full Time Positions Filled (NEET, LTU, Local Job Seekers & Education Leavers)

**5** Graduate Positions Filled

**12** Kickstart / Kickstart + Positions Offered

**289** People worked on the Gull Wing Project so far

**3** Apprenticeship Positions Filled

**£250,000+** Spent so far locally on Accommodation and Food

**35** Local Schools and Colleges contacted for School Engagement

## Further Information and Contacts

For more information on Gull Wing, visit [www.gullwingbridge.co.uk](http://www.gullwingbridge.co.uk)  
You can email the project team at [info@gullwingbridge.co.uk](mailto:info@gullwingbridge.co.uk) or telephone 01502 512779

If you no longer wish to receive updates about the Gull Wing bridge please email us on [info@gullwingbridge.co.uk](mailto:info@gullwingbridge.co.uk) and we will remove you from the mailing list.

Follow us on Twitter - @gullwingbridge and Facebook - Gullwingbridge or follow the links below.

For up-to-date information about roadworks in Lowestoft, please visit [one.network](http://one.network)