



JULY 2021 UPDATE

June 2021 - Site Achievements

- Land Piling commenced.
- Track Monitoring Equipment installed on the railway.
- Site Compound Offices completed
- Dolphin Piles delivered to North Quay
- Sewer Diversions on Riverside Road
- Commencement of Lings Motor retaining wall
- Post Box on Waveney Drive moved

There is also considerable work taking place offsite including:

- Bridge Operation mechanical and electrical system design
- Temporary Works to enable railway span

Upcoming Works

- Marine works due to commence.
- Site Compound Offices on South Side due to be occupied.
- Continuation of ground works on Colin Law Way
- Utilities diversions at Colin Law Way entrance.
- Utilities diversion work for Denmark Road/Peto Way.

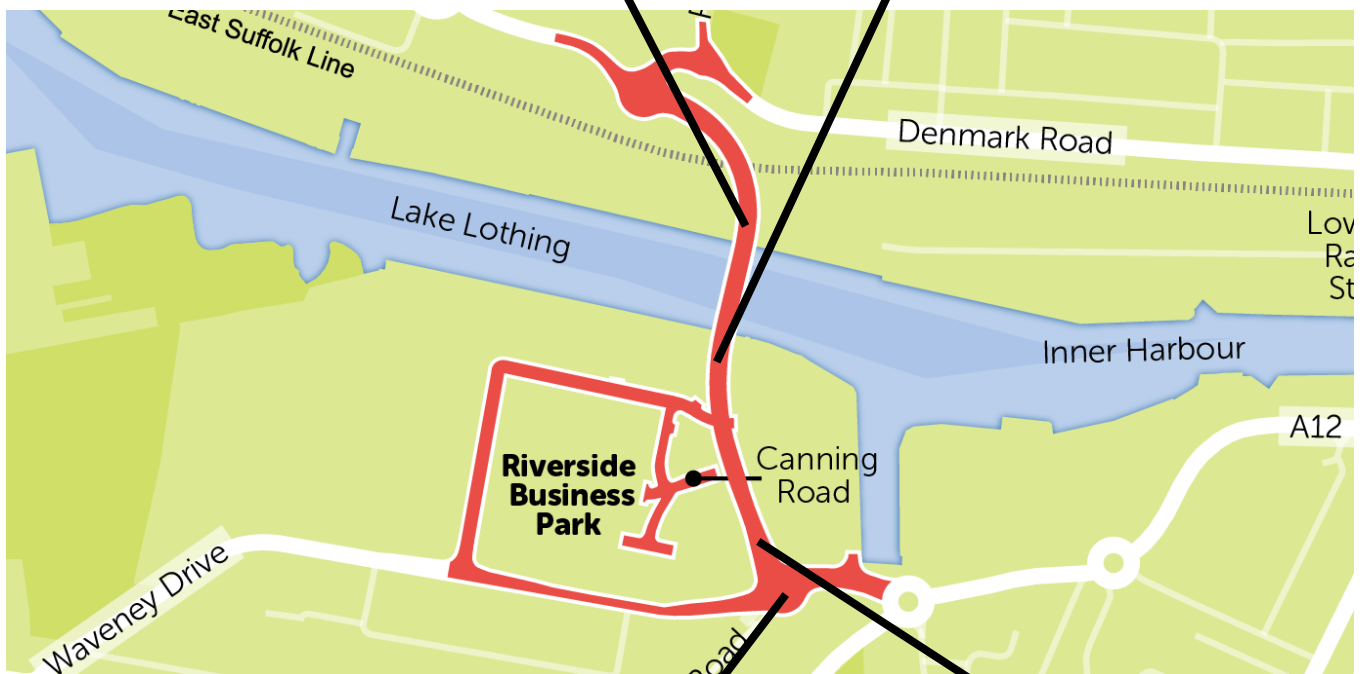
Around The Site



Dolphin Piles – North Quay



Piling Works – Pier 3



Waveney Drive Traffic Management



Riverside Rd Sewer Installation

Land Piling Works



Another progress milestone for the Gull Wing was reached during June with the starting of the piling works for the bridge.

What is piling and why is it needed?

Piling is the way that foundations are installed into the ground. These foundations transfer the load of the bridge down into strong ground which is well below the surface. Every bridge pier or abutment needs foundations. The Gull Wing bridge has an abutment at each end and 7 piers (two of which are in the lake).

What type of piling are we using?

The marine piling in the lake and land piling are different. The marine piling is large diameter steel tubes which are driven deep into the ground using piling rigs sitting on very large jack leg barges. More information on this will be provided in a few weeks.

The land piling is what we call Continuous Flight Auger piling (CFA for short). For CFA piles we effectively drill a 1.2m diameter, 28m deep hole into the ground using a 60t piling rig and then fill that hole with reinforced concrete. The size of the piles was determined by the ground testing that was done during the design stage. By planning CFA piles this will mitigate noise impacts associated with more traditional piling techniques. The material we drill out of the holes will be re-used on site to form the base of the new access road – Colin Law Way, this helps to reduce HGV movements to and from the site.

Each CFA pile will require 30 cubic metres of concrete. In total we have 129 piles to install (over 3 ½ km of total length).

When will this work be done?

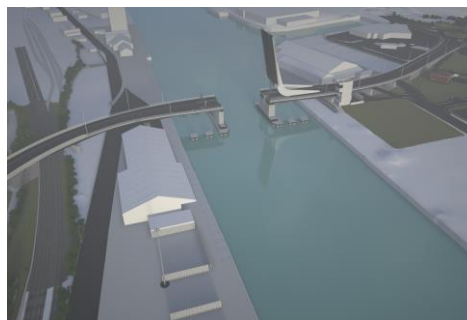
The CFA piling work starts this week on the south side and will be for Pier 3, which also supports the control tower. This work will continue well into 2022. In July we will be starting the marine piling in the lake.

Marine Piling Works

We have begun the preparation works for the marine piling work. This involves some further ground investigations using a rig set up on this. The long reach excavator is removing obstructions from the piling locations.

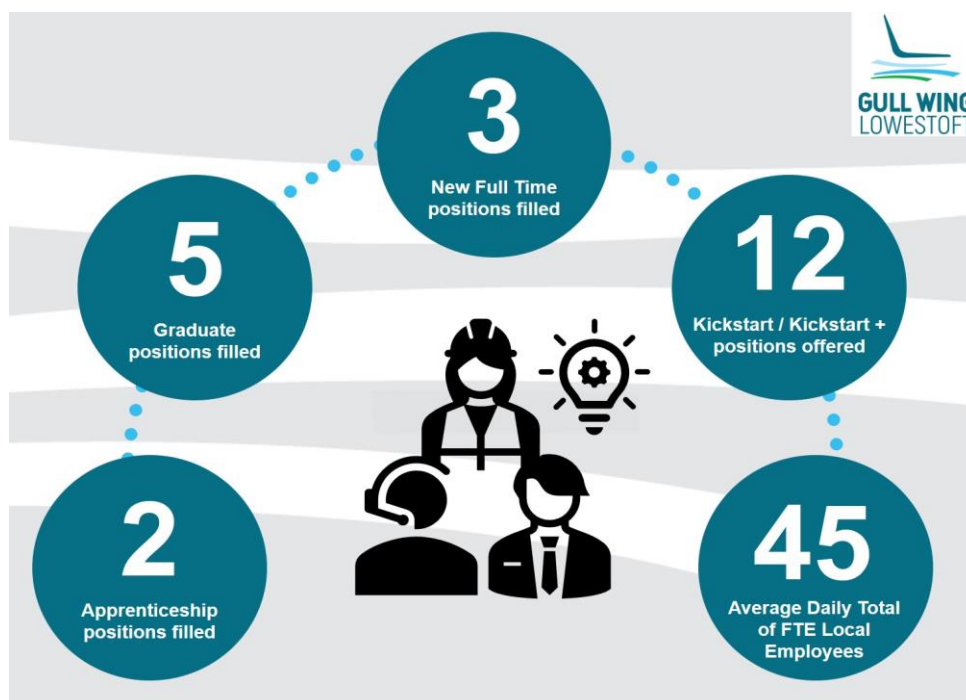


The first piles to be done will be for the “dolphins”. These are structures that will protect the two bridge supports that are in the Lake from impact and will also act as navigation guides. They can be seen on this view of the new bridge below.



Supporting the Local Community

Social Value Achievements to date



Local Opportunities

We have taken on 2 Apprentices on the project now and are looking for Level 5 and 6 Apprentices in Engineering and Quantity Surveying.

Fred (pictured), who is one of the new Apprentices, has been on the project a few weeks now and is local to the area. He said the following about his new opportunity.



“Whilst studying my Engineering Extended Diploma at University Technical College in Norwich, I was told about an Apprenticeship opportunity in my area. I live locally just up the coast so applied for the Engineering Degree Apprenticeship which I will be completing through Anglia Ruskin University. Looking forward to the next couple of years.”

If you're interested in any of the apprenticeship opportunities, work experience or any other employment opportunities, please email info@gullwingbridge.co.uk.

Meet the Team

Robert Hughes Planning Manager



Hello, my name is Robert, I work for Farrans as the Planning Manager for the Gull Wing and have been on the project since March 2021.

As a planner, it is my responsibility to gather the information provided from the team to plan activities, manage time efficiently and reduce any risk on the Project as well as ensuring we stick to our schedule.

I have worked in Construction for over 15 years around East Anglia. I'm local to the area, and having worked around Lowestoft many times over my career I understand the scale of congestion around the existing bridges, and how the Gull Wing will alleviate the issue, and revitalise the local area and economy by improving access to areas of the town.

Outside of work I spend a lot of time training and competing in triathlons, I have completed three half ironman's and have another planned for this year and I am hoping to make my way to a full ironman in the near future!

Nicol High

Intern on the Gull Wing Team - Suffolk County Council



Hi! I'm Nicol, and at the beginning of June, I joined the Gull Wing team as part of Suffolk County Council's 12-week summer internship cohort.

I love Lowestoft, it's my hometown, and I am so pleased that after three years of studying Media and Cultural Studies at the University of Roehampton, I can return back here and be involved in such an exciting opportunity. Though our town faces many challenges today, highlighted even more by the pandemic, I am very much looking forward to spending my summer working on a project that will be so impactful on the bright future of our town.

So far, I've been sitting in on key stakeholder meetings, and putting together my own ideas for communications and social media content. I've also been working with the other SCC interns from other directorates on our own group project - a marketing campaign to improve climate change literacy across the whole council, in conjunction with the new e-learning module that's available to staff.

I cannot wait to see what the next nine-weeks and Gull Wing will bring!

A little bit about Rising High in Suffolk.....

Whether you are a graduate, university student or still in secondary school, Rising High provides work experience opportunities within public sector organisations across the county: including Suffolk County Council, West Suffolk Council, East Suffolk Council, Babergh and Mid Suffolk District Councils, Suffolk Schools and Suffolk Police.

Find out more: [Suffolk Jobs Direct \(risinghighsuffolk.org.uk\)](https://risinghighsuffolk.org.uk)



Traffic Management Update

Commercial Road Update

Commercial Road. There are temporary parking restrictions implemented from 5th July 2021 on Commercial Road for the duration of the works associated with the Bridge. As part of the works we expect an increase to traffic, including the amount of HGV traffic, that will be travelling down the road. To ensure safety for road users and pedestrians, double yellow lines and parking restriction will be implemented between numbers 27 – 41 to allow 2 way traffic.

Further Information

For more information on Gull Wing, visit www.gullwingbridge.co.uk
You can email the project team at info@gullwingbridge.co.uk or telephone 01502 512779

If you no longer wish to receive updates about the Gull Wing bridge please email us on info@gullwingbridge.co.uk and we will remove you from the mailing list.

Follow us on Twitter - @gullwingbridge and Facebook - Gullwingbridge or follow the links below.

For up-to-date information about roadworks in Lowestoft, please visit one.network